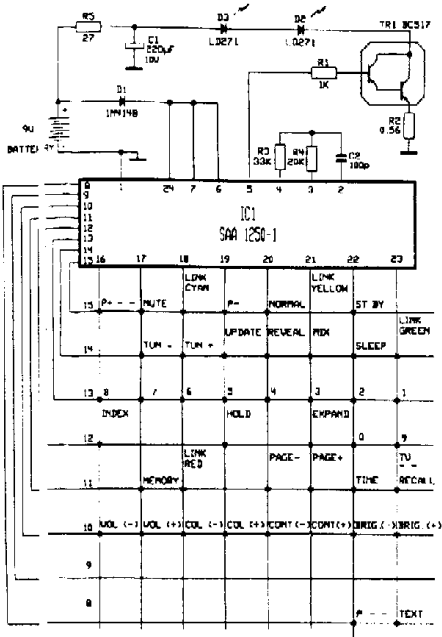
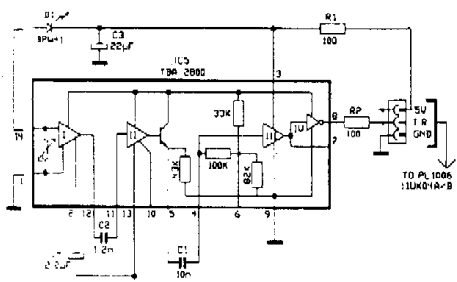


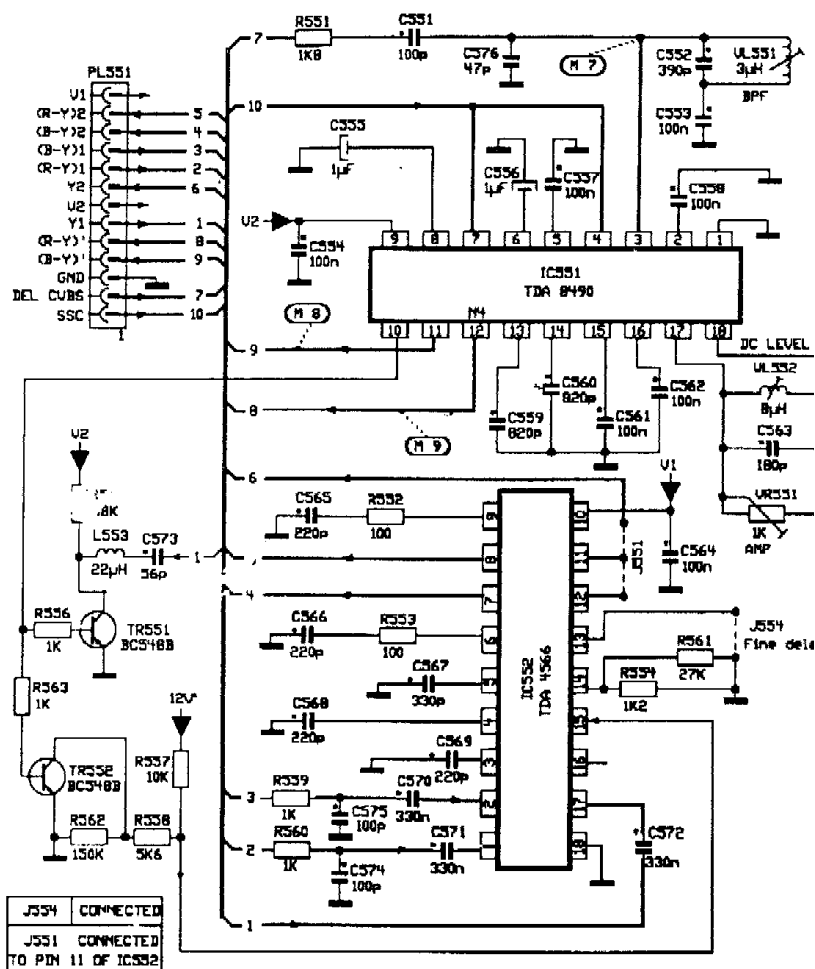
11 UV 04 RC Transmitter Diagram



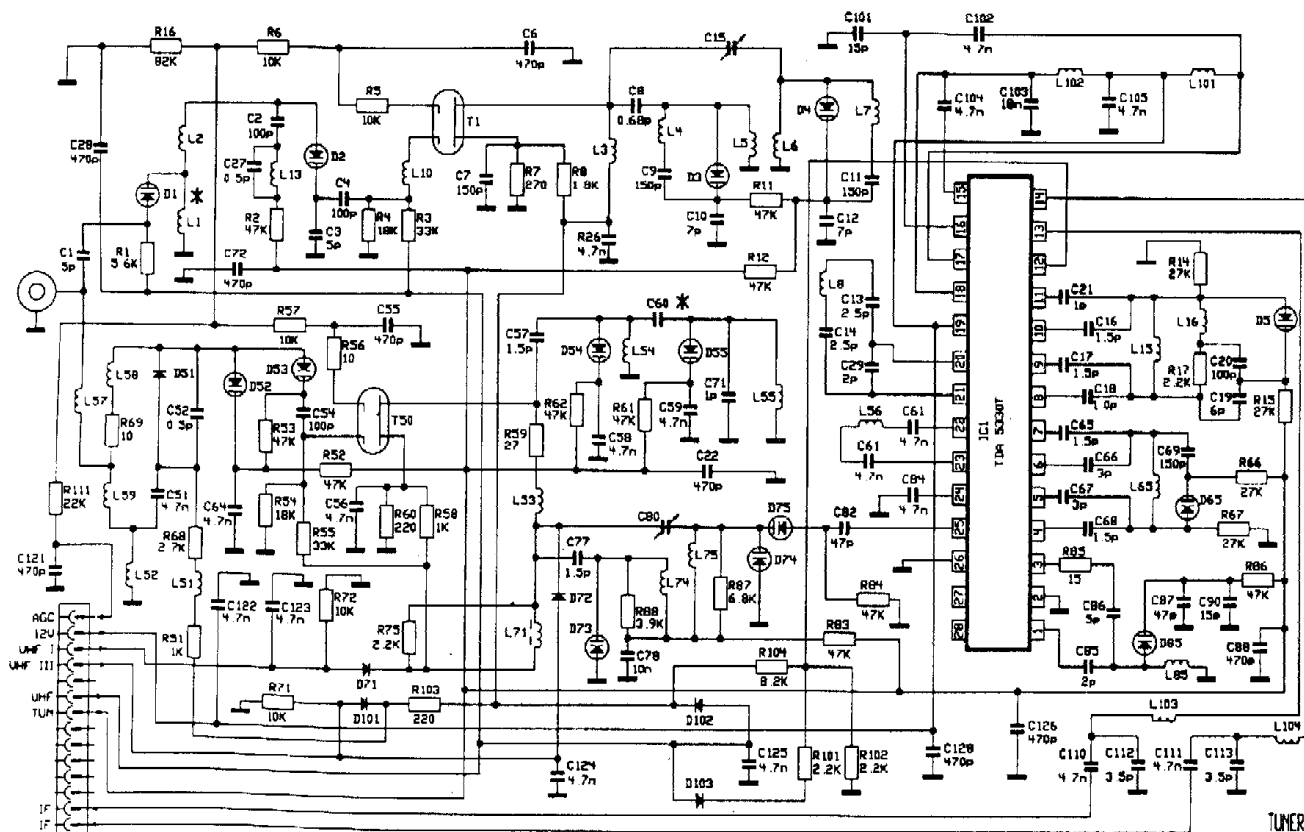
11 OY 01 IR Pre-Amp Diagram



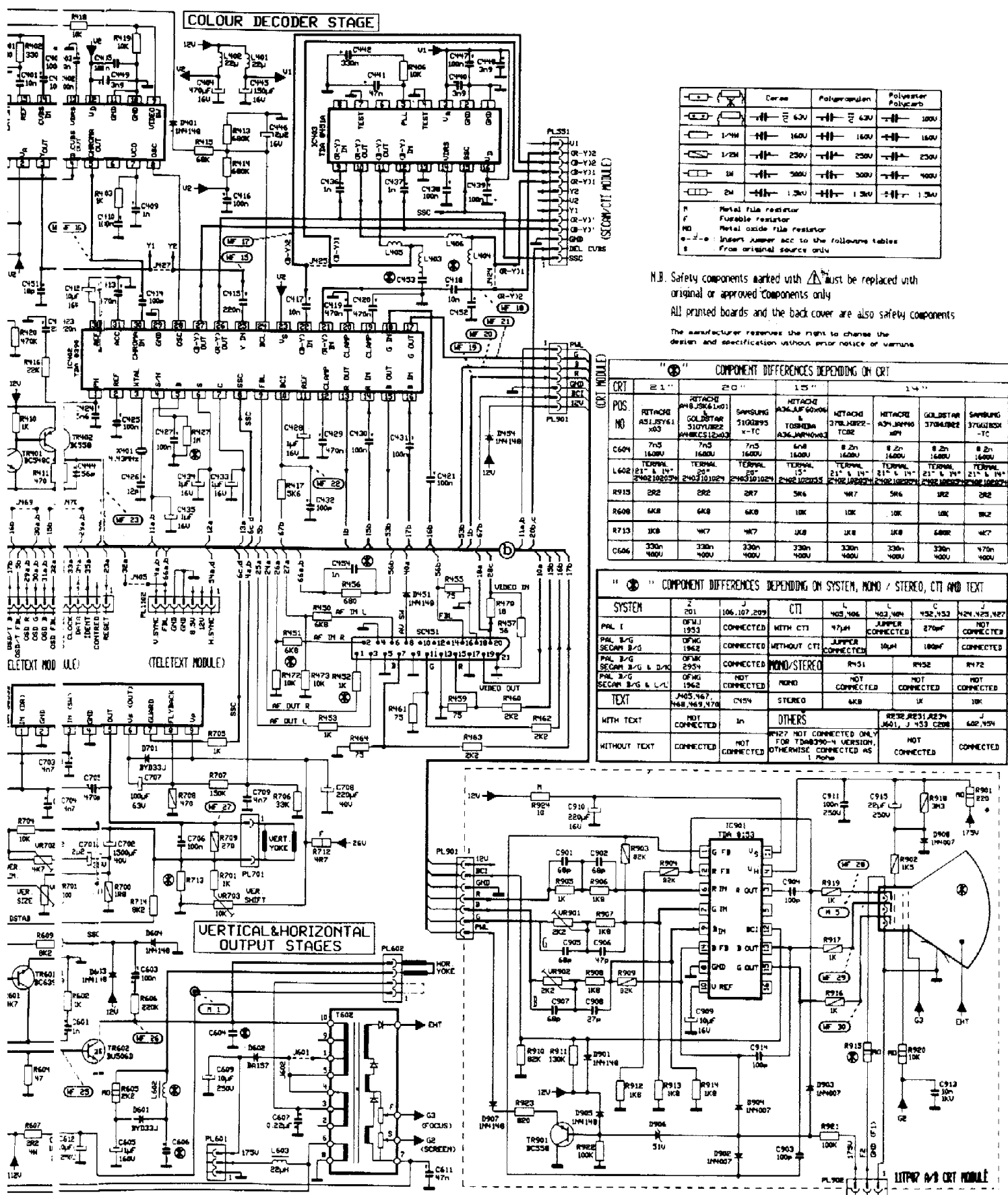
11 SC 01 SECAM & CTI Diagram



Tuner Diagram

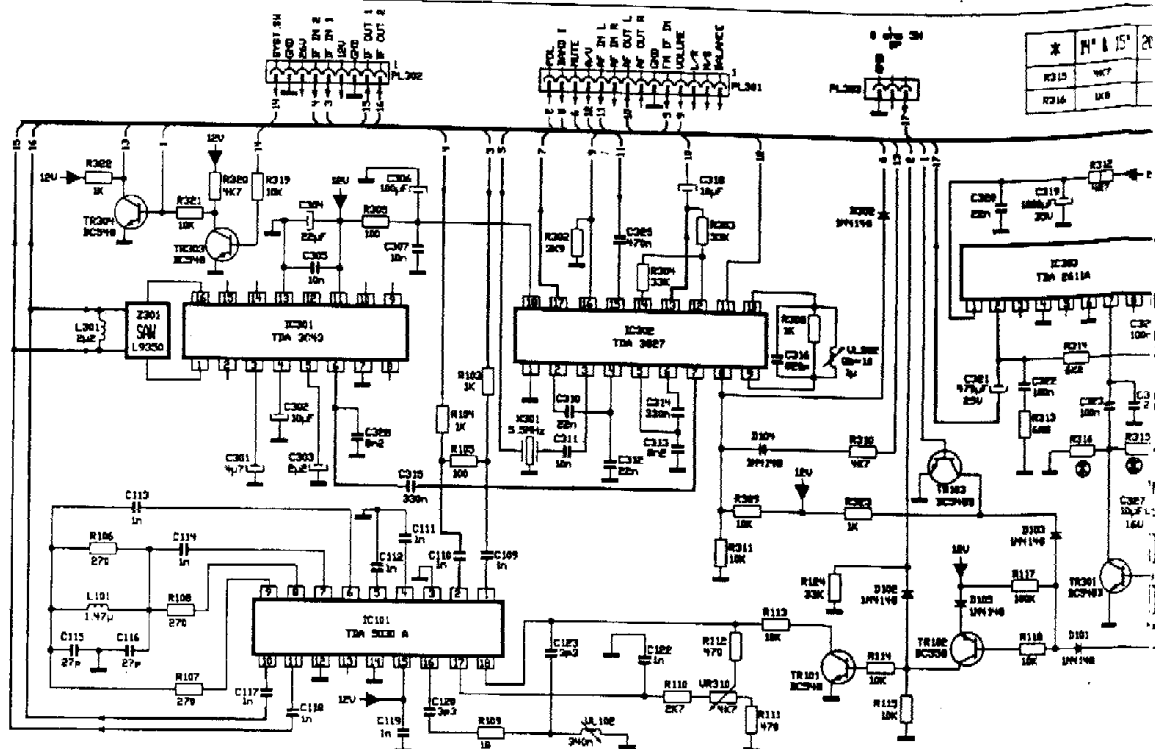


Main Diagram



WF 3

11 SO 01 Sound Diagram (L/L & B/G)



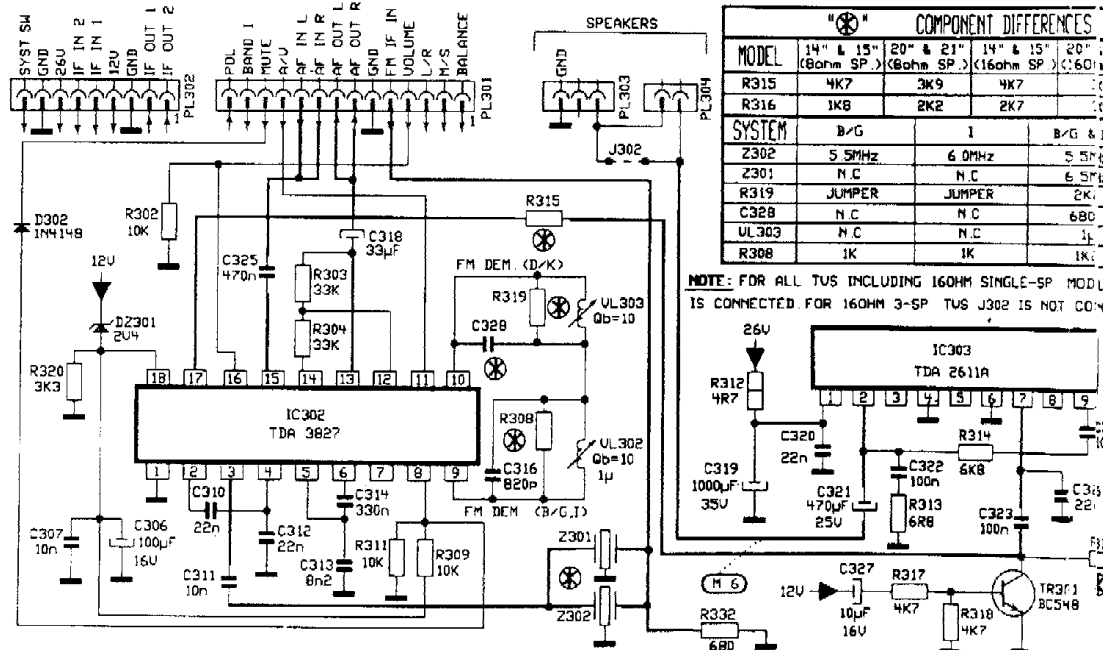
Electrical Parts List IC's

IC302	IC TDA 3827 - 013242352
IC303	IC TDA 2611A - 013242402
IC201	IC TDA 4504A - 013242472
IC401	IC TDA 8452A - 013242522
IC402	IC TDA 8390 4 - 013242582
IC403	IC TDA 8451A - 013242602
IC701	IC TDA 3853B - 013229812
IC801	IC TDA 4601 - 013223402
IC802	IC LM 317T - 013242102
IC901	IC TDA 8153 - 013242802
IC1001	IC LM 78L05 - 013240852
IC1003	IC MDA 2062 - 013200320
IC1003	IC MDA 2062 - 013200330
IC1002	IC 7805 - 013225002
IC1004	IC TPO 2066 VES 05 - 013242412
IC1005	IC LM 2901 - 013206302
IC1102	IC DPU 2543 - 013240352
IC1103	IC LM 317T - 013242102
IC1104	IC TPU 2732 - 013230852
IC1105	IC HM 4164 - 013231352

Transistors

TR201	TR BC548B - 013120702
TR202	TR BC548B - 013120702
TR401	TR BC548C - 013120712
TR402	TR BC558B - 013120902
TR601	TR BC639 - 013100902
TR602	TR BU506D - 013118082
TR801	TR BU508A - 013108102
TR802	TR BC548B - 013120702
TR1002	TR BC848B SMD - 013720882
TR1003	TR BC848B SMD - 013720882
TR1004	TR BC848B SMD - 013720882
TR1006	TR BF240 - 013115102
TR1007	TR BC848B SMD - 013720882
TR1010	SMD JUMPER WIRE - 014031441
TR1011	TR BC848B SMD - 013720882
TR1012	TR BC848B SMD - 013720882
TR1014	TR BC548B - 013120702
TR1102	TR BC548B - 013120702
TR1103	TR BF240 - 013115102
TR1104	TR BC548B - 013120702
TR1105	TR BC548B - 013120702
TR1106	TR BC548B - 013120702
TR1107	TR BC548B - 013120702
TR1108	TR BC548B - 013120702
TR1109	TR BC548B - 013120702
TR1110	TR BC548B - 013120702
TR1111	TR BC548B - 013120702
TR1112	TR BC548B - 013120702
TR1113	TR BC548B - 013120702

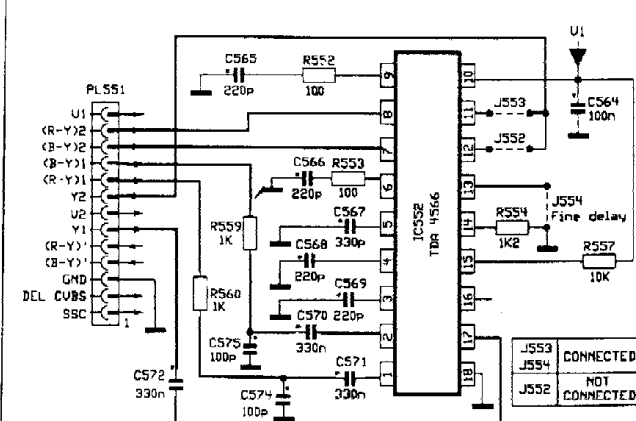
11 SD 01 - C Sound Diagram (B/G,I,D/K)



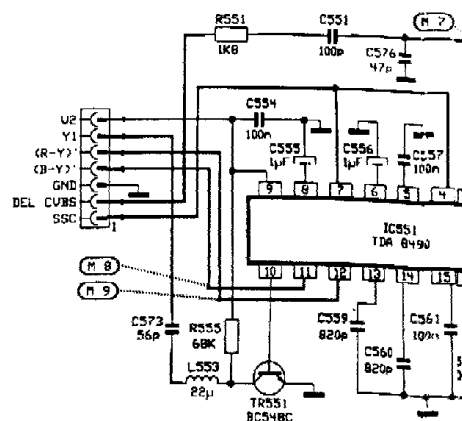
MODEL	14" & 15" (8ohm SP.)	20" & 21" (8ohm SP.)	14" & 15" (16ohm SP.)	20" & 21" (16ohm SP.)
R315	4K7	3K9	4K7	3K9
R316	1K8	2K2	2K7	2K7
SYSTEM	B/G	I	B/G & I	B/G & I
Z302	5.5MHz	6.0MHz	5.5MHz	6.0MHz
Z301	N.C.	N.C.	N.C.	6.5MHz
R319	JUMPER	JUMPER	2K1	2K1
C328	N.C.	N.C.	680	680
UL303	N.C.	N.C.	1p	1p
R308	1K	1K	1K1	1K1

NOTE: FOR ALL TUS INCLUDING 160HM SINGLE-SP. MOD. IS CONNECTED. FOR 160HM 3-SP. TUS J302 IS NOT CONNECTED.

11 CT 01 CTI Diagram



11 SM 01 SECAM Diagram



TR1112, TR1113, R1112R, R1123, R1124, R1135, R1113 AND C112B WILL NOT BE USED WITH TUPO 2065 VES-04 VERSION OF CONTROLLER IC.

T'

94

Figure 1 illustrates the experimental setup. A subject is seated at a table, looking at a video screen. A video camera is positioned above the screen. A light source is positioned to the left of the screen. A target is positioned to the right of the screen. The subject's hand is positioned near the target. The diagram shows the relative positions of the subject, camera, screen, light source, and target.

11. C

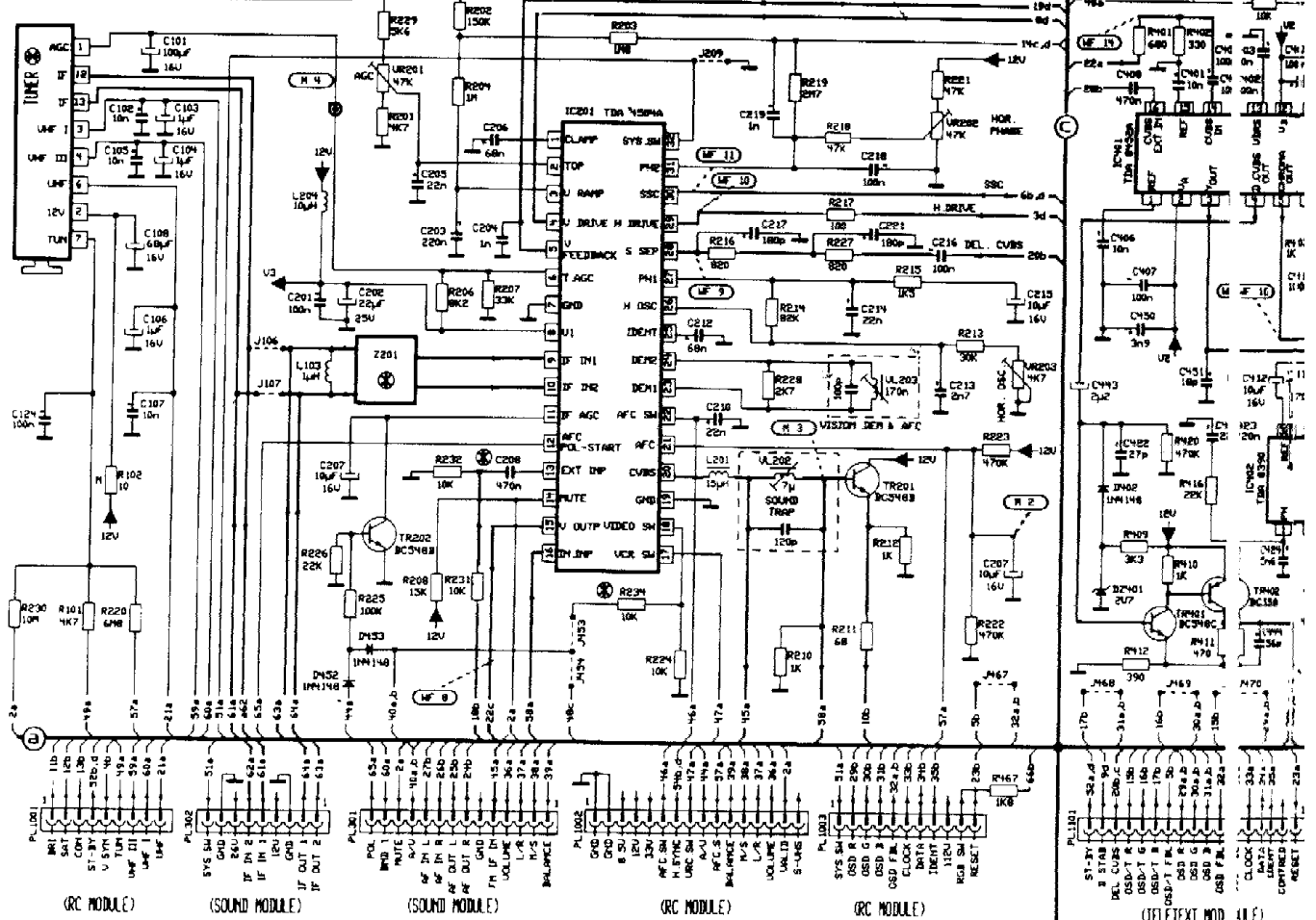
14

—

—

353 CONNECTED
 354
 355 CONNECTED
 356
 357
 358
 359
 360
 361
 362
 363
 364
 365
 366
 367
 368
 369
 370
 371
 372
 373
 374
 375
 376
 377
 378
 379
 380
 381
 382
 383
 384
 385
 386
 387
 388
 389
 390
 391
 392
 393
 394
 395
 396
 397
 398
 399
 400
 401
 402
 403
 404
 405
 406
 407
 408
 409
 410
 411
 412
 413
 414
 415
 416
 417
 418
 419
 420
 421
 422
 423
 424
 425
 426
 427
 428
 429
 430
 431
 432
 433
 434
 435
 436
 437
 438
 439
 440
 441
 442
 443
 444
 445
 446
 447
 448
 449
 450
 451
 452
 453
 454
 455
 456
 457
 458
 459
 460
 461
 462
 463
 464
 465
 466
 467
 468
 469
 470
 471
 472
 473
 474
 475
 476
 477
 478
 479
 480
 481
 482
 483
 484
 485
 486
 487
 488
 489
 490
 491
 492
 493
 494
 495
 496
 497
 498
 499
 500
 501
 502
 503
 504
 505
 506
 507
 508
 509
 510
 511
 512
 513
 514
 515
 516
 517
 518
 519
 520
 521
 522
 523
 524
 525
 526
 527
 528
 529
 530
 531
 532
 533
 534
 535
 536
 537
 538
 539
 540
 541
 542
 543
 544
 545
 546
 547
 548
 549
 550
 551
 552
 553
 554
 555
 556
 557
 558
 559
 560
 561
 562
 563
 564
 565
 566
 567
 568
 569
 570
 571
 572
 573
 574
 575
 576
 577
 578
 579
 580
 581
 582
 583
 584
 585
 586
 587
 588
 589
 590
 591
 592
 593
 594
 595
 596
 597
 598
 599
 600
 601
 602
 603
 604
 605
 606
 607
 608
 609
 610
 611
 612
 613
 614
 615
 616
 617
 618
 619
 620
 621
 622
 623
 624
 625
 626
 627
 628
 629
 630
 631
 632
 633
 634
 635
 636
 637
 638
 639
 640
 641
 642
 643
 644
 645
 646
 647
 648
 649
 650
 651
 652
 653
 654
 655
 656
 657
 658
 659
 660
 661
 662
 663
 664
 665
 666
 667
 668
 669
 670
 671
 672
 673
 674
 675
 676
 677
 678
 679
 680
 681
 682
 683
 684
 685
 686
 687
 688
 689
 690
 691
 692
 693
 694
 695
 696
 697
 698
 699
 700
 701
 702
 703
 704
 705
 706
 707
 708
 709
 710
 711
 712
 713
 714
 715
 716
 717
 718
 719
 720
 721
 722
 723
 724
 725
 726
 727
 728
 729
 730
 731
 732
 733
 734
 735
 736
 737
 738
 739
 740
 741
 742
 743
 744
 745
 746
 747
 748
 749
 750
 751
 752
 753
 754
 755
 756
 757
 758
 759
 760
 761
 762
 763
 764
 765
 766
 767
 768
 769
 770
 771
 772
 773
 774
 775
 776
 777
 778
 779
 780
 781
 782
 783
 784
 785
 786
 787
 788
 789
 790
 791
 792
 793
 794
 795
 796
 797
 798
 799
 800
 801
 802
 803
 804
 805
 806
 807
 808
 809
 810
 811
 812
 813
 814
 815
 816
 817
 818
 819
 820
 821
 822
 823
 824
 825
 826
 827
 828
 829
 830
 831
 832
 833
 834
 835
 836
 837
 838
 839
 840
 841
 842
 843
 844
 845
 846
 847
 848
 849
 850
 851
 852
 853
 854
 855
 856
 857
 858
 859
 860
 861
 862
 863

IF & SYNC SEPARATOR STAGE



(RC MODULE)

(SOUND MODULE)

(SOUND MODULE)

(RC MODULE)

(RC MODULE)

(TELETEXT MOD. ULE)

SMPS STAGE

