

# ***SERVICE MANUAL***

---

AZ2FM CHASSIS

Segment: P-2F

<b>Version</b>	<b>Date</b>	<b>Subject</b>
1.0	12/2010	Original manual issue.

LCD Digital Color TV

**SONY**®

# MODEL LIST

<i>MODEL</i>	<i>COLOR</i>	<i>COMMANDER</i>	<i>DEST.</i>
<b>KL V-26BX320</b>	Black	RM-SA020	China
<b>KL V-32BX320</b>	Black	RM-SA020	China
<b>KL V-32BX321</b>	Black/Black	RM-SA020	China
<b>KL V-32BX323</b>	Black/Brown	RM-SA020	China
<b>KL V-32BX325</b>	Black/Gun Metallic	RM-SA020	China
<b>KL V-37BX320</b>	Black	RM-SA020	China
<b>KL V-40BX420</b>	Black	RM-SA020	China
<b>KL V-40BX421</b>	Black/Black	RM-SA020	China
<b>KL V-40BX423</b>	Black/Brown	RM-SA020	China
<b>KL V-40BX425</b>	Black/Gun Metallic	RM-SA020	China

<i>MODEL</i>	<i>COLOR</i>	<i>COMMANDER</i>	<i>DEST.</i>
--------------	--------------	------------------	--------------

# WARNINGS AND CAUTIONS - ENGLISH

---

## CAUTION

These servicing instructions are for use by qualified service personnel only.

To reduce the risk of electric shock, do not perform any servicing other than that contained in the operating instructions unless you are qualified to do so.

## WARNING!!

An isolation transformer should be used during any service to avoid possible shock hazard, because of live chassis.

The chassis of this receiver is directly connected to the ac power line.

## CARRYING THE TV

Be sure to follow these guidelines to protect your property and avoid causing serious injury.

- Carry the TV with an adequate number of people; larger size TVs require two or more people.
- Correct hand placement while carrying the TV is very important for safety and to avoid damages.

## SAFETY-RELATED COMPONENT WARNING!!

Components identified by shading and ! mark on the schematic diagrams, exploded views, and in the parts list are critical for safe operation. Replace these components with Sony parts whose part numbers appear as shown in this manual or in supplements published by Sony. Circuit adjustments that are critical for safe operation are identified in this manual.

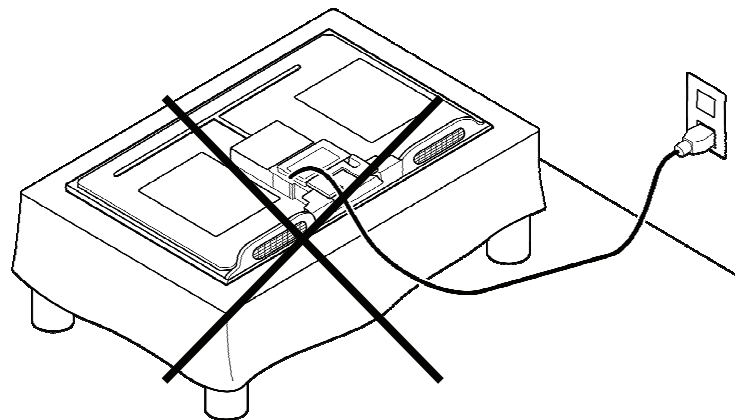
Follow these procedures whenever critical components are replaced or improper operation is suspected.

## USE CAUTION WHEN HANDLING THE LCD PANEL

When repairing the LCD panel, be sure you are grounded by using a wrist band.

When repairing the LCD panel on the wall, the LCD panel must be secured using the 4 mounting holes on the rear cover.

- 1) Do not press on the panel or frame edge to avoid the risk of electric shock.
- 2) Do not scratch or press on the panel with any sharp objects.
- 3) Do not leave the module in high temperatures or in areas of high humidity for an extended period of time.
- 4) Do not expose the LCD panel to direct sunlight.
- 5) Avoid contact with water. It may cause a short circuit within the module.
- 6) Disconnect the AC power when replacing the backlight (CCFL) or inverter circuit. (High voltage occurs at the inverter circuit at 650Vrms.)
- 7) Always clean the LCD panel with a soft cloth material.
- 8) Use care when handling the wires or connectors of the inverter circuit. Damaging the wires may cause a short.
- 9) Protect the panel from ESD to avoid damaging the electronic circuit (C-MOS).
- 10) It is recommended not to exceed 1 hour of Power-On nor Burn-in period with LCD panel face down condition, in repair activity.





# SAFETY CHECK-OUT

---

After correcting the original service problem, perform the following safety checks before releasing the set to the customer:

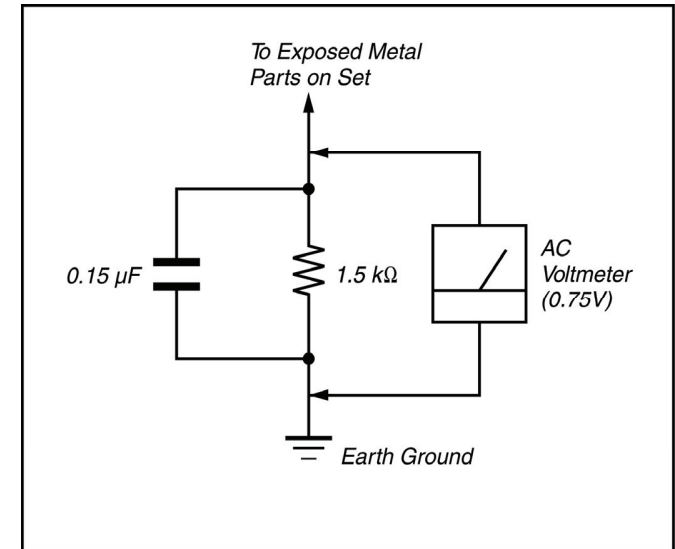
1. Check the area of your repair for unsoldered or poorly soldered connections. Check the entire board surface for solder splashes and bridges.
2. Check the interboard wiring to ensure that no wires are “pinched” or touching high-wattage resistors.
3. Check that all control knobs, shields, covers, ground straps, and mounting hardware have been replaced. Be absolutely certain that you have replaced all the insulators.
4. Look for unauthorized replacement parts, particularly transistors, that were installed during a previous repair. Point them out to the customer and recommend their replacement.
5. Look for parts which, though functioning, show obvious signs of deterioration. Point them out to the customer and recommend their replacement.
6. Check the line cords for cracks and abrasion. Recommend the replacement of any such line cord to the customer.
7. Check the antenna terminals, metal trim, “metallized” knobs, screws, and all other exposed metal parts for AC leakage. Check leakage as described below.
8. For safety reasons, repairing the Power board and/or Inverter board is prohibited.

### Leakage Test

The AC leakage from any exposed metal part to earth ground and from all exposed metal parts to any exposed metal part having a return to chassis, must not exceed 0.5 mA (500 microamperes).

Leakage current can be measured by any one of three methods.

1. A commercial leakage tester, such as the Simpson 229 or RCA WT-540A. Follow the manufacturers' instructions to use these instructions.
2. A battery-operated AC milliammeter. The Data Precision 245 digital multimeter is suitable for this job.
3. Measuring the voltage drop across a resistor by means of a VOM or battery-operated AC voltmeter. The "limit" indication is 0.75 V, so analog meters must have an accurate low voltage scale. The Simpson's 250 and Sanwa SH-63TRD are examples of passive VOMs that are suitable. Nearly all battery-operated digital multimeters that have a 2 VAC range are suitable (see Figure A).



FigureA. Using an AC voltmeter to check AC leakage.

### How to Find a Good Earth Ground

A cold-water pipe is a guaranteed earth ground; the cover-plate retaining screw on most AC outlet boxes is also at earth ground.

If the retaining screw is to be used as your earth ground, verify that it is at ground by measuring the resistance between it and a cold-water pipe with an ohmmeter. The reading should be zero ohms.

If a cold-water pipe is not accessible, connect a 60- to 100-watt trouble- light (not a neon lamp) between the hot side of the receptacle and the retaining screw. Try both slots, if necessary, to locate the hot side on the line; the lamp should light at normal brilliance if the screw is at ground potential (see Figure B).

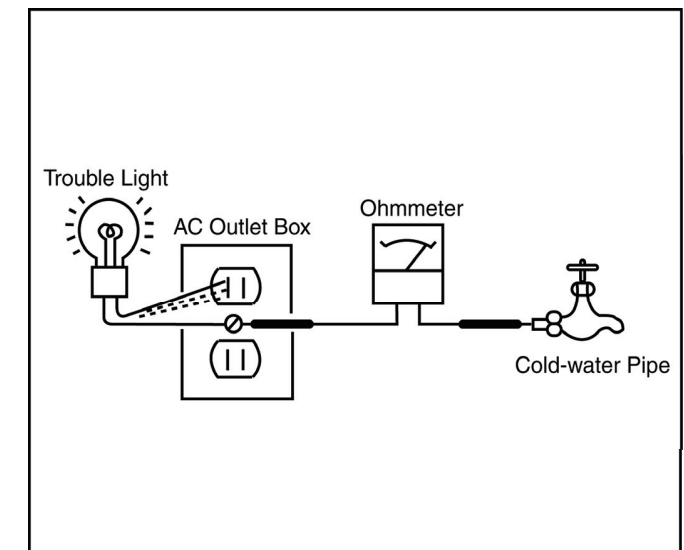


Figure B. Checking for earth ground.

# SELF DIAGNOSIS FUNCTION

The units in this manual contain a self-diagnostic function. If an error occurs, the STANDBY LED will automatically begin to flash.

The number of times the LED flashes translates to a probable source of the problem.

A definition of the STANDBY LED flash indicators is listed in the instruction manual for the user's knowledge and reference.

If an error symptom cannot be reproduced, the remote commander can be used to review the failure occurrence data stored in memory to reveal past problems and how often these problems occur.

## DIAGNOSTIC TEST INDICATORS

When an error occurs, the STANDBY LED will flash a set number of times to indicate the possible cause of the problem.

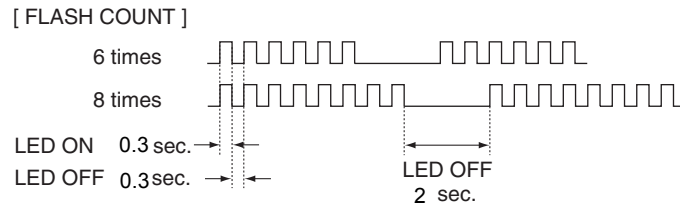
If there is more than one error, the LED will identify the first of the problem areas.

Result for all of the following diagnostic items are displayed on screen.

If the screen displays a "0", no error has occurred .

STBY LED Flash time	Service menu Item name (Screen Dsisplay)	Diagnostic Item Description
6	Inverter_ERR	When The connection to the Inverter board is not proper, or the inverter board has something wrong.("Inverter_ERR")
8	AU PROT	When the connections of the speaker has DC level difference("AU PROT") Or Main Amp has the Over Current or High temperature status ("Amp_ERR").

## DISPLAY OF STANDBY LED FLASH COUNT



## SELF-DIAGNOSTIC SCREEN DISPLAY

For errors with symptoms such as “power sometimes shuts off” or “screen sometimes goes out” that cannot be confirmed, it is possible to bring up past occurrences of failure for confirmation on the screen:



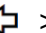
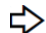

### [To Bring Up Screen Test]

In standby mode, press buttons on the remote commander sequentially in rapid succession as shown below:



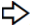
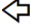
Note: The screen display of SELF-DIAGNOSTIC SCREEN DISPLAY confirms from factory menu.

DISPLAY → Channel 5 → Volume + → TV POWER

### [How to use the remote commander]

Function	The flow of control
Factory mode on	<Display><5><Vol Up><Power>
Menu up/down	<  > / <  >
Data change	<  > / <  >
Execute	<  >

**[SELF DIAGNOSTIC SCREEN DISPLAY]**

- a) Press  /  to select "SELF DIAGNOSIS".  
 b) Press  to enter the menu.  
 c) Press  to returned "FACTORY MENU".


**[Exiting the Self-diagnostic screen]**


To exit the Self Diagnostic screen, turn off the power to the TV by pressing the POWER button on the remote or the POWER button on the TV.

# SEC 1. DISASSEMBLY AND PART LIST

---

- Items with no part number and no description are not stocked because they are seldom required for routine service.
- The construction parts of an assembled part are indicated with a collation number in the remark column.
- Items marked " \* " are not stocked since they are seldom required for routine service. Some delay should be anticipated when ordering these items.

The components identified by shading and mark  are critical for safety. Replace only with part number specified.

The components identified by mark  contain confidential information. Strictly follow the instructions whenever the components are repaired and/or replaced.

## 1-1. KLV-26BX320

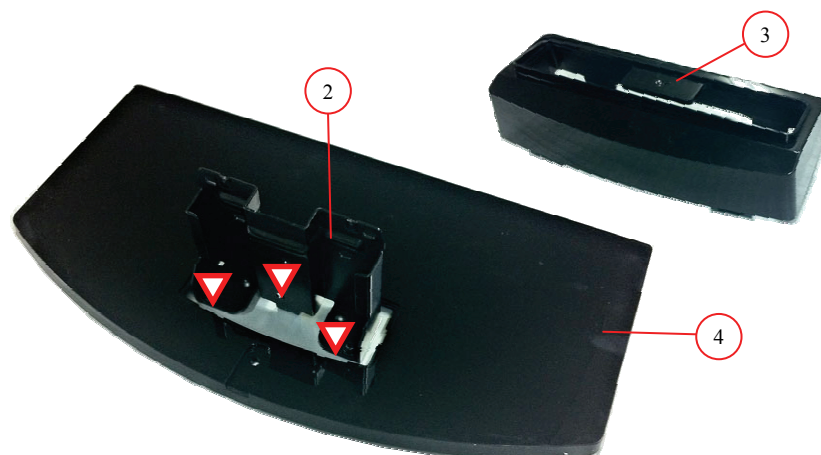
## 1-1-1. STAND ASSY AND REAR COVER ASSY

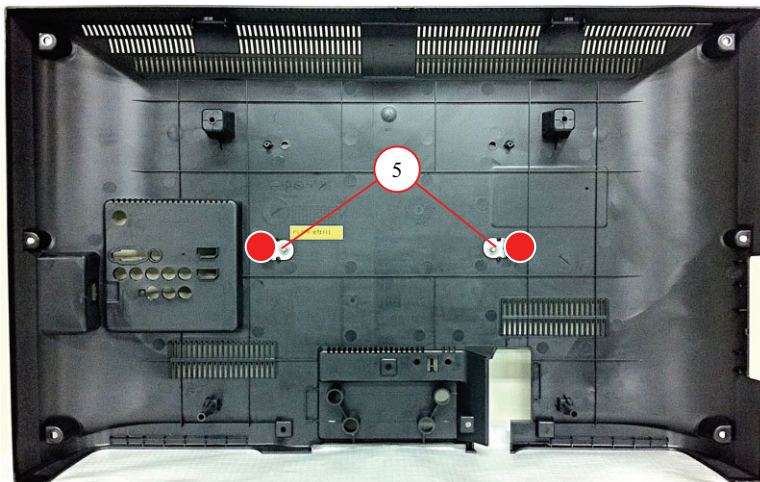
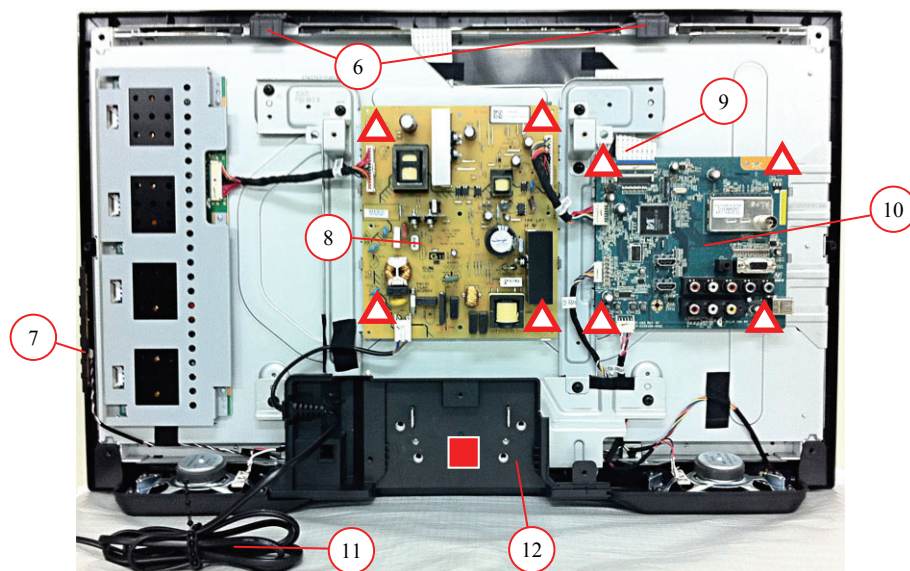


REF. No.	PART No.	DESCRIPTION	MARK
1	△ 4-262-537-01	REAR COVER BARE (GF26)	
2	4-158-354-01	NECK (M3B)	
3	4-158-400-01	COVER, NECK (M3B)	
4	X-2514-986-2	BASE (M3B) ASSY	

○	T.B.D	T.B.D
■	T.B.D	T.B.D
●	T.B.D	T.B.D
+	2-580-608-01	SCREW, +PSW M5X16
▽	4-159-298-01	SCREW, +PSW M4X10

## 1-1-2. BASE ASSY, NECK AND NECK COVER



**1-1. KLV-26BX320****1-1-3. VESA BRACKET****1-1-4. B BOARD, G BOARD, UNDER COVER AND SWITCH UNIT**

REF. No.	PART No.	DESCRIPTION	MARK
5	4-272-462-01	BRACKET VESA (M4)	
6	4-262-572-01	SUPPORT, PANEL (GF26)	
7	⚠ 1-489-579-11	SWITCH UNIT	
8	⚠ 1-474-297-11	STATIC CONVERTER (TV)-G13	
9	1-910-103-22	CONNECTOR ASSY 26 FFC	
10	🔒 1-857-883-11	MOUNTED PWB A	
11	⚠ 1-839-056-11	POWER-SUPPLY CORD 1.98M	
12	4-262-573-01	COVER, UNDER (GF26)	

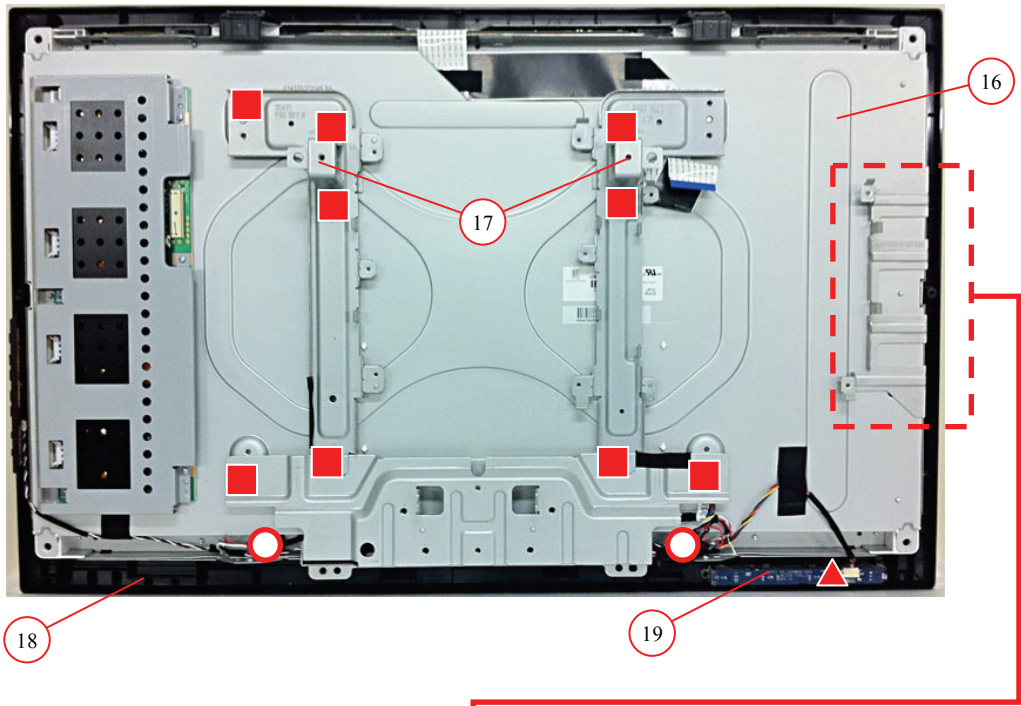
●	T.B.D	T.B.D
△	T.B.D	T.B.D
■	T.B.D	T.B.D





1-1. KLV-26BX320

1-1-6. H BOARD, LCD PANEL AND BEZEL ASSY



REF. No.	PART No.	DESCRIPTION	MARK
16	⚠ 1-811-371-11	LCD PANEL (C26B3-L07)	
17	4-264-371-01	BRACKET, VESA (GF26L)	
18	4-272-483-01	BEZEL (GF26)	
19	1-857-884-11	MOUNTED PWB H	
	■	T.B.D	T.B.D
	○	T.B.D	T.B.D
	▲	T.B.D	T.B.D
	☆	T.B.D	T.B.D

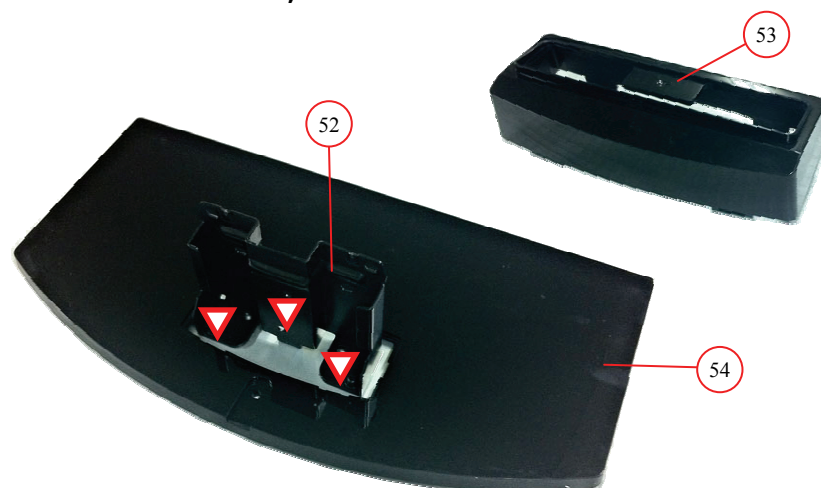
## 1-2. KLV-32BX320/321/323/325

### 1-2-1. STAND ASSY AND REAR COVER ASSY



REF. No.	PART No.	DESCRIPTION	MARK
51	⚠ 4-262-538-01	REAR COVER BARE (GF32)	KLV-32BX320
51	⚠ 4-262-575-01	REAR COVER BARE (CF32)	KLV-32BX321/323/325
52	4-158-354-01	NECK (M3B)	
53	4-158-400-01	COVER, NECK (M3B)	
54	X-2514-986-2	BASE (M3B) ASSY	
	○	T.B.D	T.B.D
	□	T.B.D	T.B.D
	●	T.B.D	T.B.D
	+	2-580-608-01	SCREW, +PSW M5X16
	▽	4-159-298-01	SCREW, +PSW M4X10

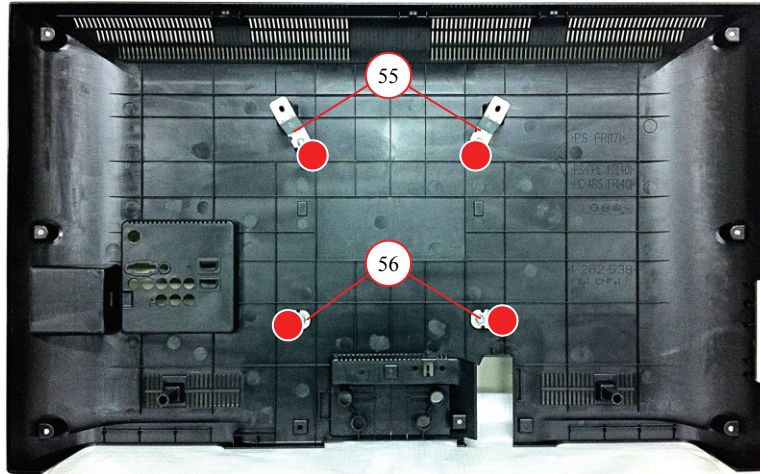
### 1-2-2. BASE ASSY, NECK AND NECK COVER





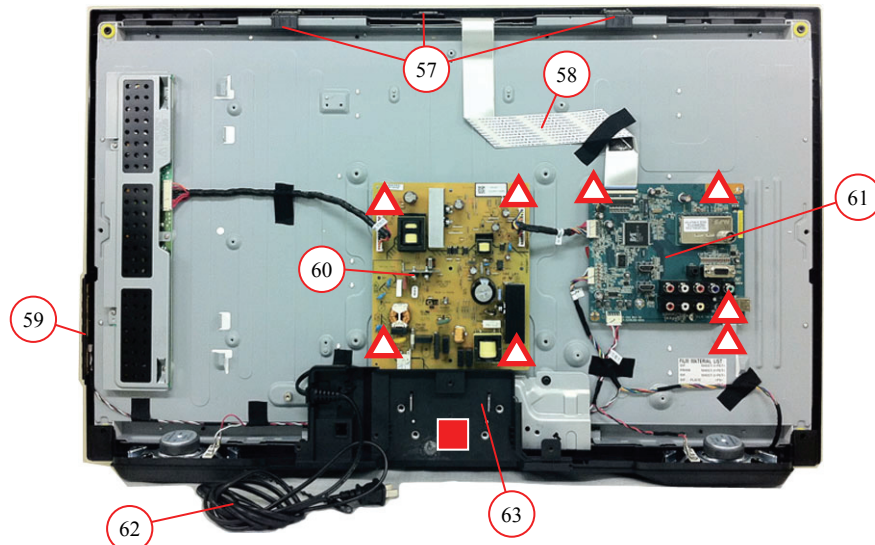
## 1-2. KLV-32BX320/321/323/325

### 1-2-3. VESA BRACKET



REF. No.	PART No.	DESCRIPTION	MARK
55	4-264-374-01	BRACKET, VESA (GF32L)	KLV-32BX320
55	4-265-974-01	BRACKET, VESA (CF32)	KLV-32BX321/323/325
56	4-272-463-01	BRACKET VESA (M6)	
57	4-262-572-01	SUPPORT, PANEL (GF26)	
58	1-910-103-23	CONNECTOR ASSY 32 FFC	
59	⚠ 1-489-579-11	SWITCH UNIT	KLV-32BX320
59	⚠ 1-489-580-11	SWITCH UNIT	KLV-32BX321/323/325
60	⚠ 1-474-297-11	STATIC CONVERTER (TV)-G13	
61	🔒 1-857-883-11	MOUNTED PWB A	
62	⚠ 1-839-056-11	POWER-SUPPLY CORD 1.98M	
63	4-262-573-01	COVER, UNDER (GF26)	KLV-32BX320
63	4-264-382-01	COVER, UNDER (CF32)	KLV-32BX321/323/325

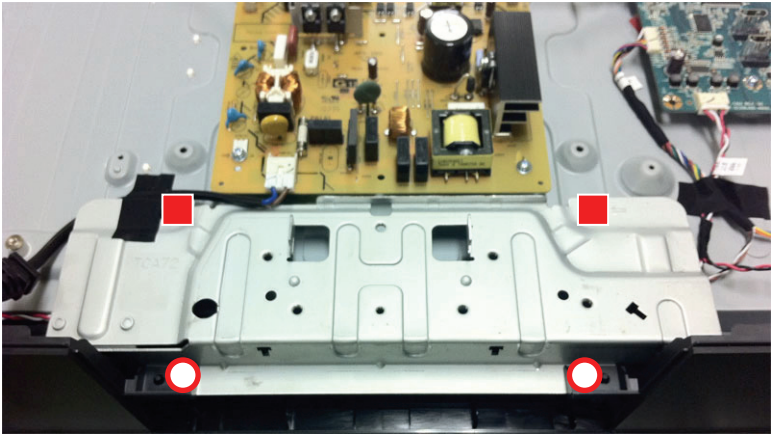
### 1-2-4. B BOARD, G BOARD, UNDER COVER AND SWITCH UNIT



●	T.B.D	T.B.D
△	T.B.D	T.B.D
■	T.B.D	T.B.D

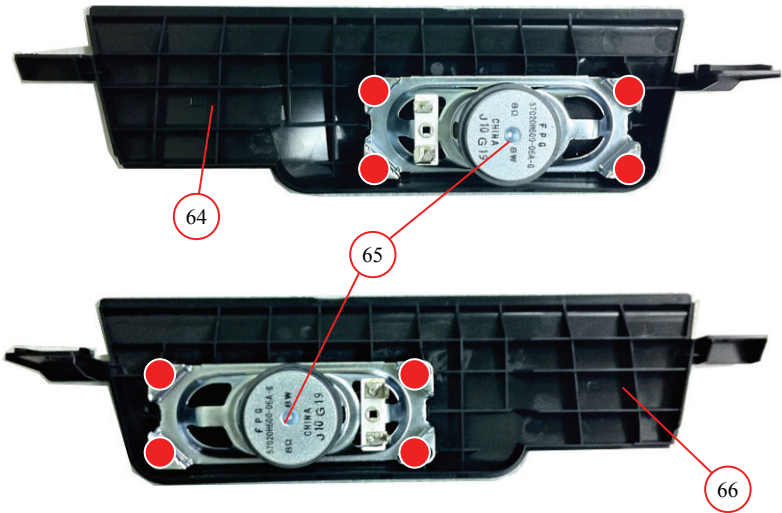
1-2. KLV-32BX320/321/323/325

1-2-5. SPEAKER AND SP BRACKET



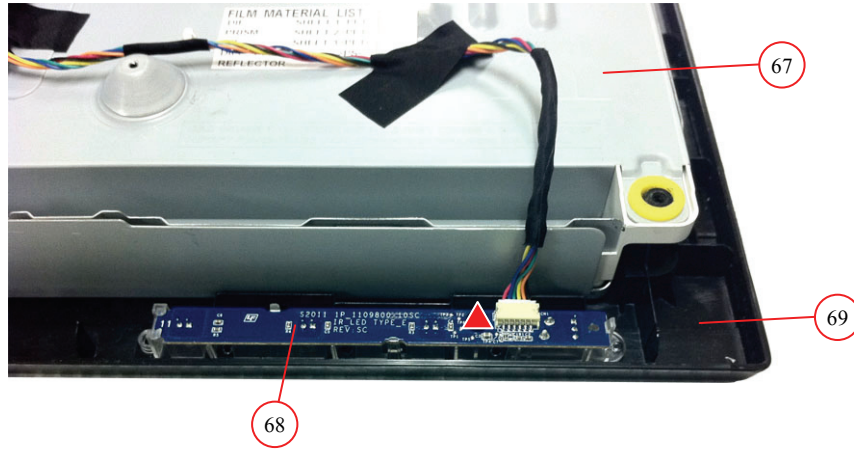
REF. No.	PART No.	DESCRIPTION	MARK
64	4-262-548-01	BRACKET, SP (GF32L)	KLV-32BX320
64	4-262-577-01	BRACKET, SP (CF32L)	KLV-32BX321/323/325
65	1-858-341-11	LOUDSPEAKER (4X10CM)	
66	4-262-549-01	BRACKET, SP (GF32R)	KLV-32BX320
66	4-262-578-01	BRACKET, SP (CF32R)	KLV-32BX321/323/325

○	T.B.D	T.B.D
●	T.B.D	T.B.D
■	T.B.D	T.B.D



## 1-2. KLV-32BX320/321/323/325

### 1-2-6. H BOARD, LCD PANEL AND BEZEL ASSY



REF. No.	PART No.	DESCRIPTION	MARK
67	⚠ 1-811-372-11	LCD PANEL (C32B6-L03)	
68	1-857-884-11	MOUNTED PWB H	KLV-32BX320
68	1-857-884-21	MOUNTED PWB H	KLV-32BX321/323/325
69	4-272-484-01	BEZEL (GF32)	KLV-32BX320
69	4-272-537-01	BEZEL (CF32)	KLV-32BX321
69	4-272-537-11	BEZEL (CF32)	KLV-32BX323
69	4-272-537-21	BEZEL (CF32)	KLV-32BX325
▲	T.B.D	T.B.D	

## 1-3. KLV-37BX320

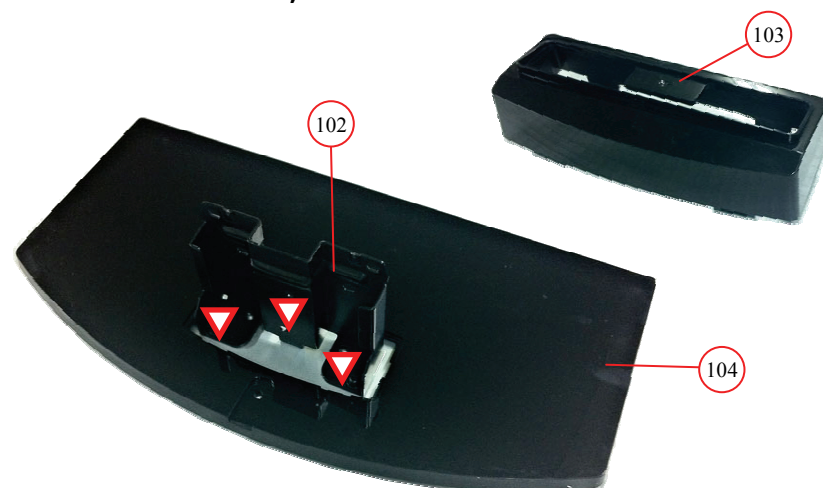
### 1-3-1. STAND ASSY AND REAR COVER ASSY



REF. No.	PART No.	DESCRIPTION	MARK
101	△ 4-262-539-01	REAR COVER BARE (GF37)	
102	4-158-355-01	NECK (ML3B)	
103	4-158-401-01	COVER, NECK (ML3B)	
104	X-2514-987-2	BASE (ML3B) ASSY	

○	T.B.D	T.B.D
■	T.B.D	T.B.D
●	T.B.D	T.B.D
★	T.B.D	T.B.D
+	2-580-608-01	SCREW, +PSW M5X16
▽	4-159-298-01	SCREW, +PSW M4X10

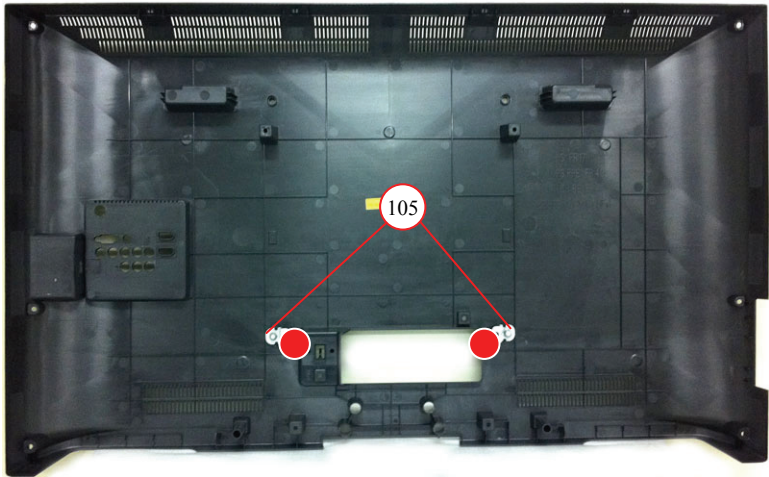
### 1-3-2. BASE ASSY, NECK AND NECK COVER





1-3. KLV-37BX320

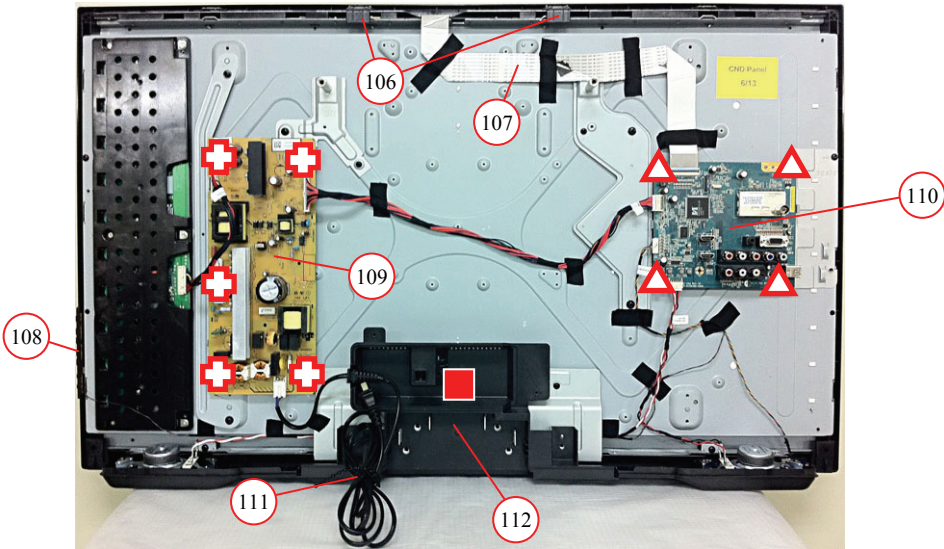
1-3-3. VESA BRACKET



REF. No.	PART No.	DESCRIPTION	MARK
105	4-272-463-01	BRACKET VESA (M6)	
106	4-262-572-01	SUPPORT, PANEL (GF26)	
107	1-910-103-25	CONNECTOR ASSY 37 LVDS	
108	⚠ 1-489-579-11	SWITCH UNIT	
109	⚠ 1-474-310-11	STATIC CONVERTER (TV)-G14	
110	🔒 1-857-883-21	MOUNTED PWB A	
111	⚠ 1-839-056-11	POWER-SUPPLY CORD 1.98M	
112	4-262-574-01	COVER, UNDER (GF37)	

●	T.B.D	T.B.D
△	T.B.D	T.B.D
■	T.B.D	T.B.D
+	T.B.D	T.B.D

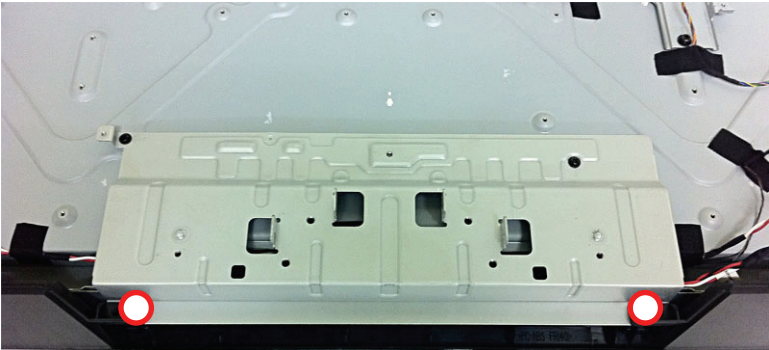
1-3-4. B BOARD, G BOARD, UNDER COVER AND SWITCH UNIT





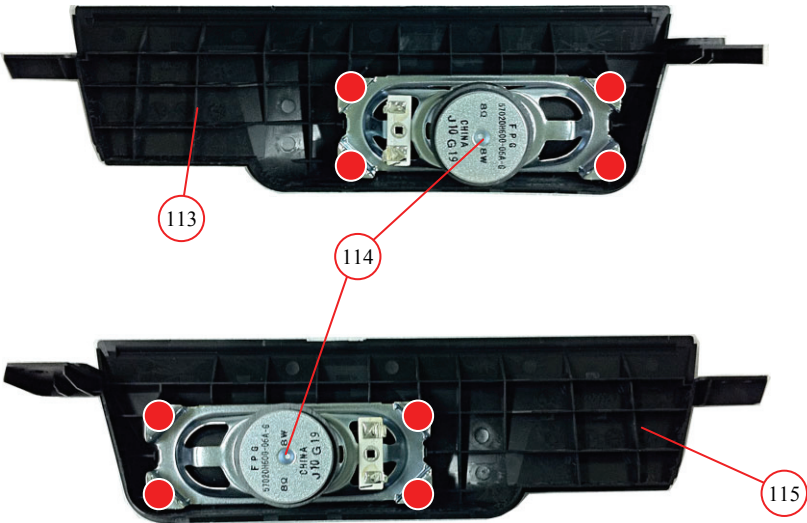
1-3. KLV-37BX320

1-3-5. SPEAKER AND SP BRACKET



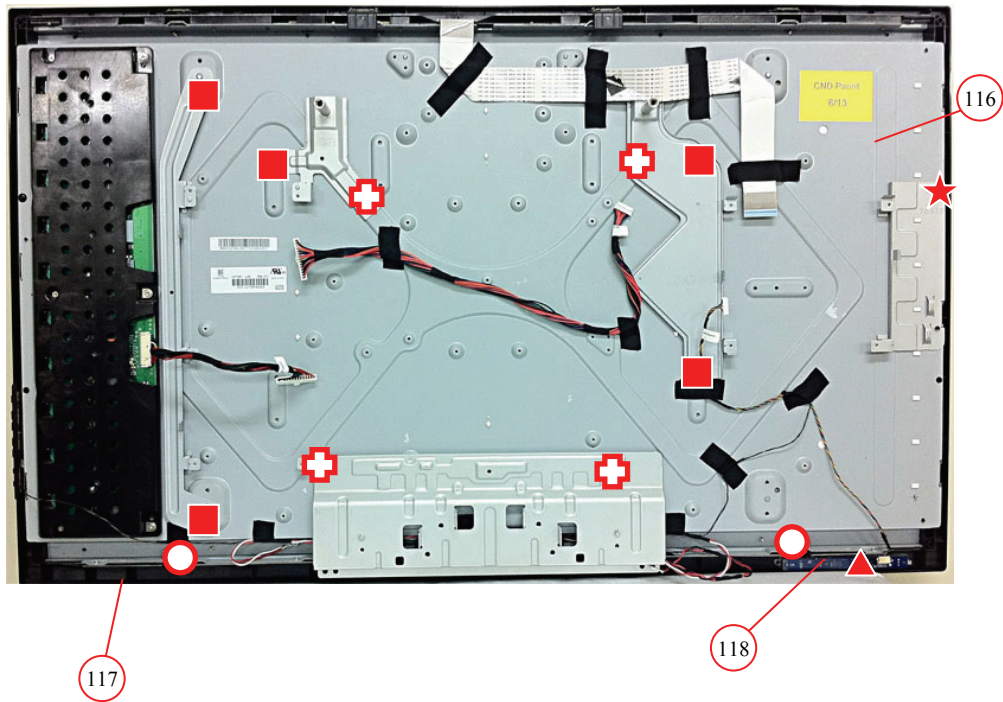
REF. No.	PART No.	DESCRIPTION	MARK
113	4-265-972-01	BRACKET, SP (GF37L)	
114	1-858-341-11	LOUDSPEAKER (4X10CM)	
115	4-265-973-01	BRACKET, SP (GF37R)	

○	T.B.D	T.B.D
●	T.B.D	T.B.D



1-3. KLV-37BX320

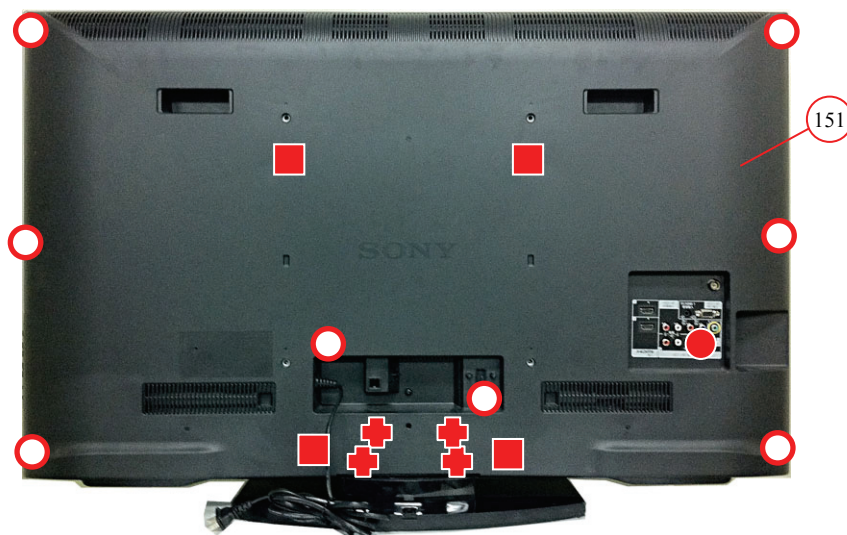
1-3-6. H BOARD, LCD PANEL AND BEZEL ASSY



REF. No.	PART No.	DESCRIPTION	MARK
116	△ 1-811-290-11	LCD PANEL (C37B1-L03)	
117	○ 4-272-485-01	BEZEL (GF37)	
118	■ 1-857-884-11	MOUNTED PWB H	
	■	T.B.D	T.B.D
	○	T.B.D	T.B.D
	▲	T.B.D	T.B.D
	★	T.B.D	T.B.D
	+	T.B.D	T.B.D

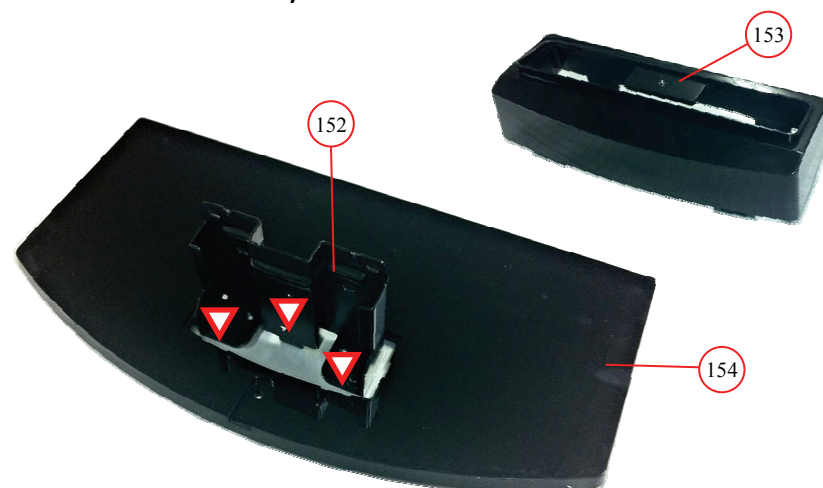
## 1-4. KLV-40BX420/421/423/425

### 1-4-1. STAND ASSY AND REAR COVER ASSY



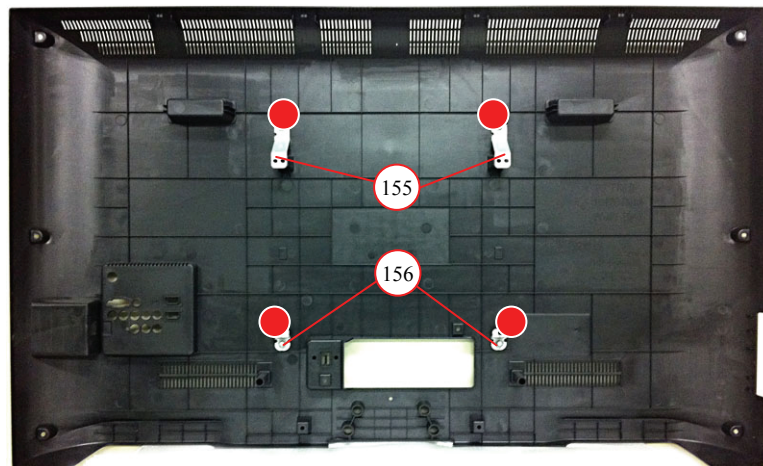
REF. No.	PART No.	DESCRIPTION	MARK
151	⚠ 4-262-540-01	REAR COVER BARE (GF40)	KLV-40BX420
151	⚠ 4-262-576-01	REAR COVER BARE (CF40)	KLV-40BX421/423/425
152	4-158-355-01	NECK (ML3B)	
153	4-158-401-01	COVER, NECK (ML3B)	
154	X-2514-987-2	BASE (ML3B) ASSY	
	○	T.B.D	T.B.D
	■	T.B.D	T.B.D
	●	T.B.D	T.B.D
	+	2-580-608-01	SCREW, +PSW M5X16
	▽	4-159-298-01	SCREW, +PSW M4X10

### 1-4-2. BASE ASSY, NECK AND NECK COVER



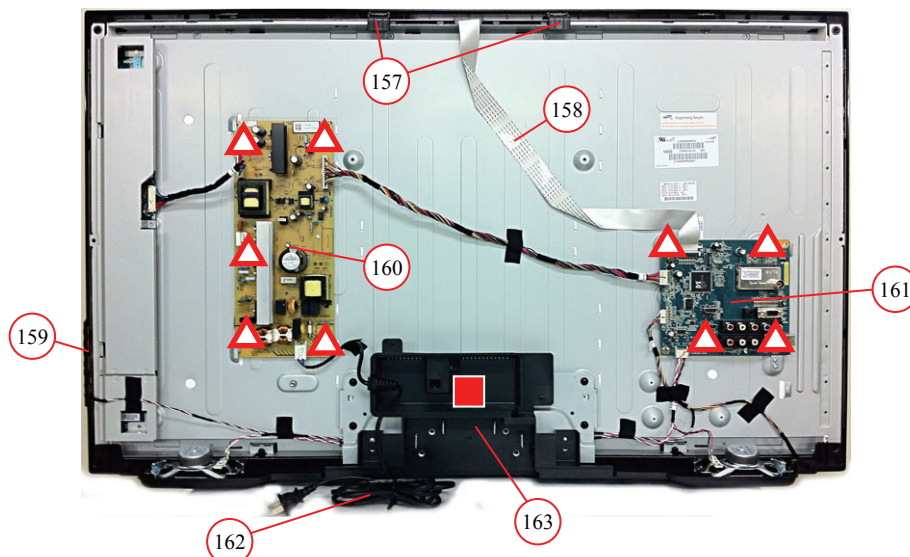
## 1-4. KLV-40BX420/421/423/425

### 1-4-3. VESA BRACKET



REF. No.	PART No.	DESCRIPTION	MARK
155	4-264-380-01	BRACKET, VESA (GF40)	KLV-40BX420
155	4-265-975-01	BRACKET, VESA (CF40)	KLV-40BX421/423/425
156	4-272-463-01	BRACKET VESA (M6)	
157	4-264-379-01	SUPPORT, PANEL (GF40)	
158	1-910-103-24	CONNECTOR ASSY 40 FFC	
159	⚠ 1-489-579-11	SWITCH UNIT	KLV-40BX420
159	⚠ 1-489-580-11	SWITCH UNIT	KLV-40BX421/423/425
160	⚠ 1-474-310-11	STATIC CONVERTER (TV)-G14	
161	🔒 1-857-883-31	MOUNTED PWB A	
162	⚠ 1-839-056-11	POWER-SUPPLY CORD 1.98M	
163	4-262-574-01	COVER, UNDER (GF37)	KLV-40BX420
163	4-264-384-01	COVER, UNDER (CF40)	KLV-40BX421/423/425

### 1-4-4. B BOARD, G BOARD, UNDER COVER AND SWITCH UNIT



●	T.B.D	T.B.D
△	T.B.D	T.B.D
■	T.B.D	T.B.D



## 1-4. KLV-40BX420/421/423/425

### 1-4-5. SPEAKER AND SP BRACKET



REF. No.	PART No.	DESCRIPTION	MARK
164	4-262-550-01	BRACKET, SP (GF40L)	KLV-40BX420
164	4-262-579-01	BRACKET, SP (CF40L)	KLV-40BX421/423/425
165	1-858-341-11	LOUDSPEAKER (4X10CM)	
166	4-262-551-01	BRACKET, SP (GF40R)	KLV-40BX420
166	4-262-580-01	BRACKET, SP (CF40R)	KLV-40BX421/423/425



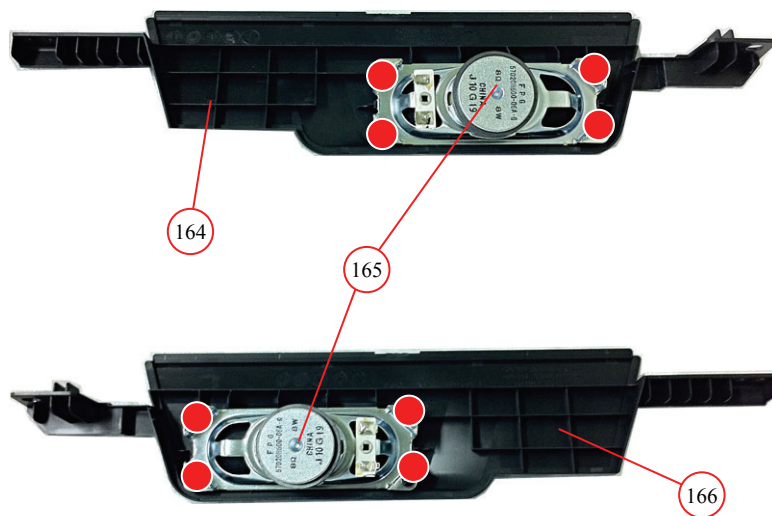
T.B.D

T.B.D



T.B.D

T.B.D



## 1-4. KLV-40BX420/421/423/425

### 1-4-6. H BOARD, LCD PANEL AND BEZEL ASSY



REF. No.	PART No.	DESCRIPTION	MARK
167	⚠ 1-811-329-21	LCD PANEL (S40ESP)	
168	4-273-014-01	BEZEL (GF40)	KLV-40BX420
168	4-273-023-01	BEZEL (CF40)	KLV-40BX421
168	4-273-023-11	BEZEL (CF40)	KLV-40BX423
168	4-273-023-21	BEZEL (CF40)	KLV-40BX425
169	1-857-884-11	MOUNTED PWB H	KLV-40BX420
169	1-857-884-21	MOUNTED PWB H	KLV-40BX421/423/425
	■	T.B.D	T.B.D
	△	T.B.D	T.B.D
	▲	T.B.D	T.B.D

**1-5. OTHER PART****1-5-1. MISCELLANEOUS**

<b>PART No.</b>	<b>DESCRIPTION</b>	<b>MARK</b>
4-272-189-01	LABEL, REAR TERMINAL	

**1-5-2. ACCESSORIES**

<b>PART No.</b>	<b>DESCRIPTION</b>	<b>MARK</b>
1-487-911-11	REMOTE COMMANDER (RM-SA020)	

# SEC 2. ADJUSTMENT

## HOW TO ENTERING FACTORY MENU

- 1) Turn on the main power switch to place this set in standby mode.
- 2) Press the buttons on the remote commander as follows, and entering factory menu.

[DISPLAY] ➡ Channel [5] ➡ Volume [ + ] ➡ [TV POWER]

- 3) Factory menu display.

FACTORY MENU	
INPUT SOURCE	ATV
WHITE BALANCE	>>
COLOR TEMP	>>
SERVICE MODE	>>
SELF DIAGNOSIS	>>
ADC ADJ	>>
AGING MODE	OFF
FACTORY RESET	OFF
EDID WP	ON
RECALL DATA	OFF
PANEL INDEX	WXGA CM026
RANGE SCAN	OFF
SAVE	OFF
退出:MENU	

- 4) How to use the remote commander.

Function	The flow of control
Factory mode on	<Display><5><Vol Up><Power>
Menu up/down	< ⬆ > / < ⬇ >
Data change	< ⬅ > / < ➡ >
Execute	< ⊕ >

- 5) After entering service mode, then turn off the power switch.



## 1. EDIT MODEL NAME

Note: When replaced B board, conduct followings.

- a) Press  $\uparrow$  /  $\downarrow$  to select "PANEL INDEX".  
 b) Press  $\leftarrow$  /  $\rightarrow$  to status change.  
     KLV-26BX320 : WXGACMO26  
     KLV-32BX320/321/323/325 : WXGA CMO32  
     KLV-37BX320 : WXGA CMO37  
     KLV-40BX420/421/423/425 : FULLHD SLCD40  
 c) Press  $\uparrow$  /  $\downarrow$  to select "SAVE".  
 d) Press  $\leftarrow$  /  $\rightarrow$  ,change status from "OFF" to "ON".  
 e) Press  $\oplus$  to execute. Status will be returned to "OFF".

FACTORY MENU	
INPUT SOURCE	ATV
WHITE BALANCE	>>
COLOR TEMP	>>
SERVICE MODE	>>
SELF DIAGNOSIS	>>
ADC ADJ	>>
AGING MODE	OFF
FACTORY RESET	OFF
EDID WP	ON
RECALL DATA	OFF
PANEL INDEX	WXGA CMO26
RANGE SCAN	OFF
SAVE	OFF
退出:MENU	

<PANEL INDEX>

## 2. EDIT FRONT BEZEL COLOR

Note: When replaced B board, conduct followings.

- a) Press  $\uparrow$  /  $\downarrow$  to select "SERVICE MODE".  
 b) Press  $\leftarrow$  /  $\rightarrow$  to enter service menu.  
 c) Press  $\uparrow$  /  $\downarrow$  to select "TYPE".  
     Change status referring the following to table.  
 d) Press  $\uparrow$  /  $\downarrow$  to select "FRONT BEZEL".  
     Change status referring the following to table.  
 e) Press  $\uparrow$  /  $\downarrow$  to select "SAVE".  
 f) Press  $\leftarrow$  /  $\rightarrow$  ,change status from "OFF" to "ON".  
 g) Press  $\oplus$  to execute. Status will be returned to "OFF".

MODEL NAME	TYPE	FRONT BEZEL
KLV-26BX320	E	BLACK
KLV-32BX320	E	BLACK
KLV-32BX321	C	BLACK
KLV-32BX323	C	BROWN
KLV-32BX325	C	SILVER
KLV-37BX320	E	BLACK
KLV-40BX420	E	BLACK
KLV-40BX421	C	BLACK
KLV-40BX423	C	BROWN
KLV-40BX425	C	SILVER

SERVICE MODE	
BACK	<<
LOW OF HPD	0
LVDS SPAN	35.0 KHz
LDVS STEP	2.00 %
MIU SPAN	35 KHz
MIU STEP	1.0 %
DPMS	ON
WB DATA	OFF
TYPE	E
FRONT BEZEL	BLACK
SAVE	OFF
TIME: ----- 退出:MENU	

<TYPE>

SERVICE MODE	
BACK	<<
LOW OF HPD	0
LVDS SPAN	35.0 KHz
LDVS STEP	2.00 %
MIU SPAN	35 KHz
MIU STEP	1.0 %
DPMS	ON
WB DATA	OFF
TYPE	E
FRONT BEZEL	BLACK
SAVE	OFF
TIME: ----- 退出:MENU	

<FRONT BEZEL>

### 3. FINISH

After change the setting of PANEL INDEX and FRONT BEZEL, please execute SAVE function to save changes, and then unplug and plug the AC Power cord in order to re-load the panel parameters.

### WHITE BLANCE ADJUSTMENT

Note: When replaced B board, conduct followings.

- Press  $\uparrow$  /  $\downarrow$  to select "WHITE BLANCE".
  - Press  $\leftarrow$  /  $\rightarrow$  to enter service menu.
  - Press  $\uparrow$  /  $\downarrow$  to select "R" or "G" or "B".
  - Press  $\leftarrow$  /  $\rightarrow$  ,change status.
  - Press  $\uparrow$  /  $\downarrow$  to select "BACK".
  - Press  $\leftarrow$  /  $\rightarrow$  to return "FACTORY MENU"
  - Press  $\uparrow$  /  $\downarrow$  to select "SAVE".
  - Press  $\leftarrow$  /  $\rightarrow$  ,change status from "OFF" to "ON".
  - Press  $\oplus$  to execute. Status will be returned to "No".
- Then system will reboot automatically as the completion.

FACTORY MENU	
INPUT SOURCE	ATV
WHITE BALANCE	>>
COLOR TEMP	>>
SERVICE MODE	>>
SELF DIAGNOSIS	>>
ADC ADJ	>>
AGING MODE	OFF
FACTORY RESET	OFF
EDID WP	ON
RECALL DATA	OFF
PANEL INDEX	WXGA CM026
RANGE SCAN	OFF
SAVE	OFF
退出:MENU	

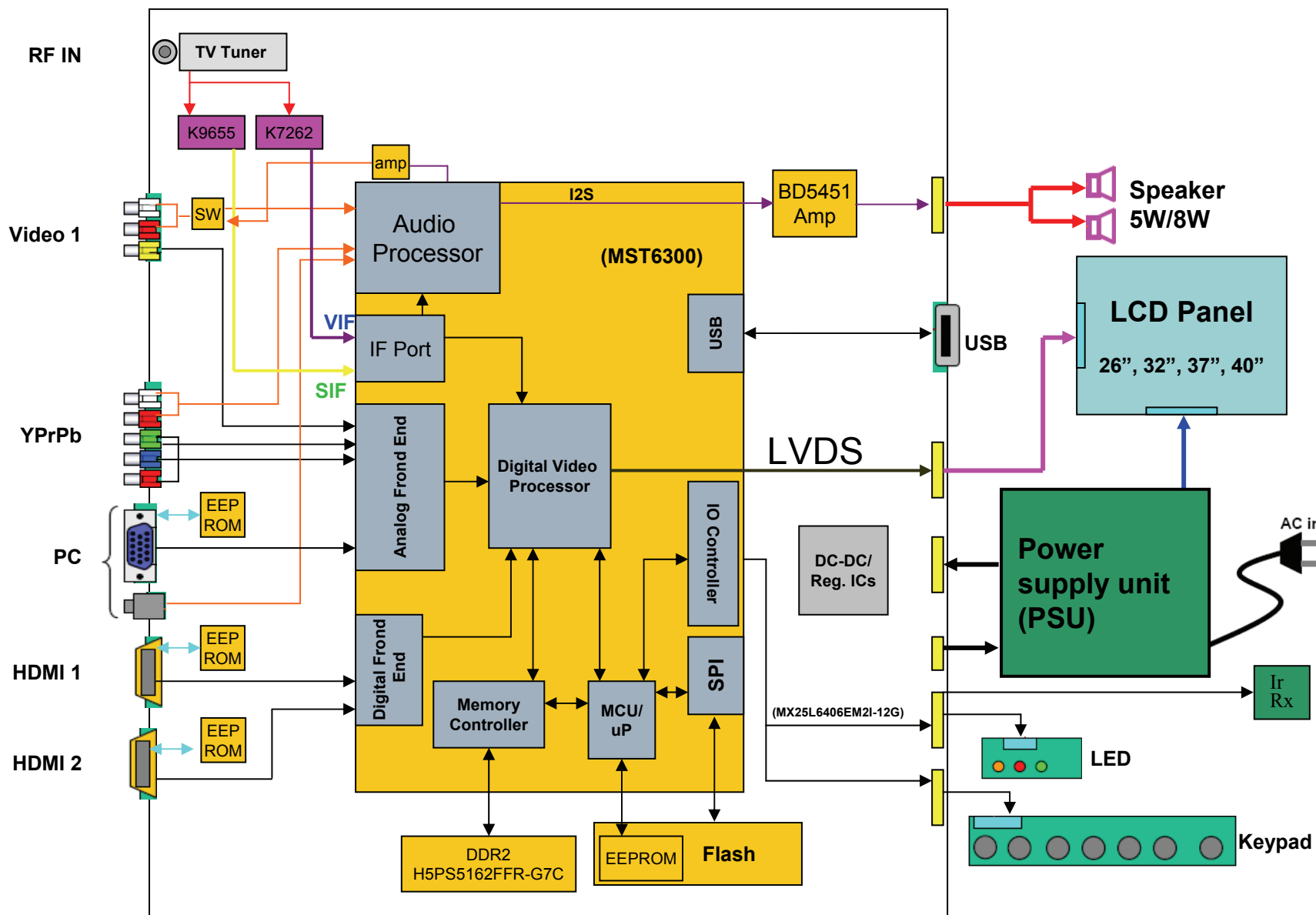
<WHITE BALANCE>

WHITE BALANCE	
BACK	<<
INTERNAL PATTERN	ON
R	0
G	0
B	0
退出:MENU	

<WHITE BALANCE MENU>

# SEC 4. DIAGRAMS

## 4-1. BLOCK DIAGRAM



# END

---