

Product: 26PF3320/10 with Display QD26HL02 REV:01

Symptom: Vertical colored lines on start up, after a while display becomes black.
(the defect is shown in pictures 1 and 2)



Picture 1

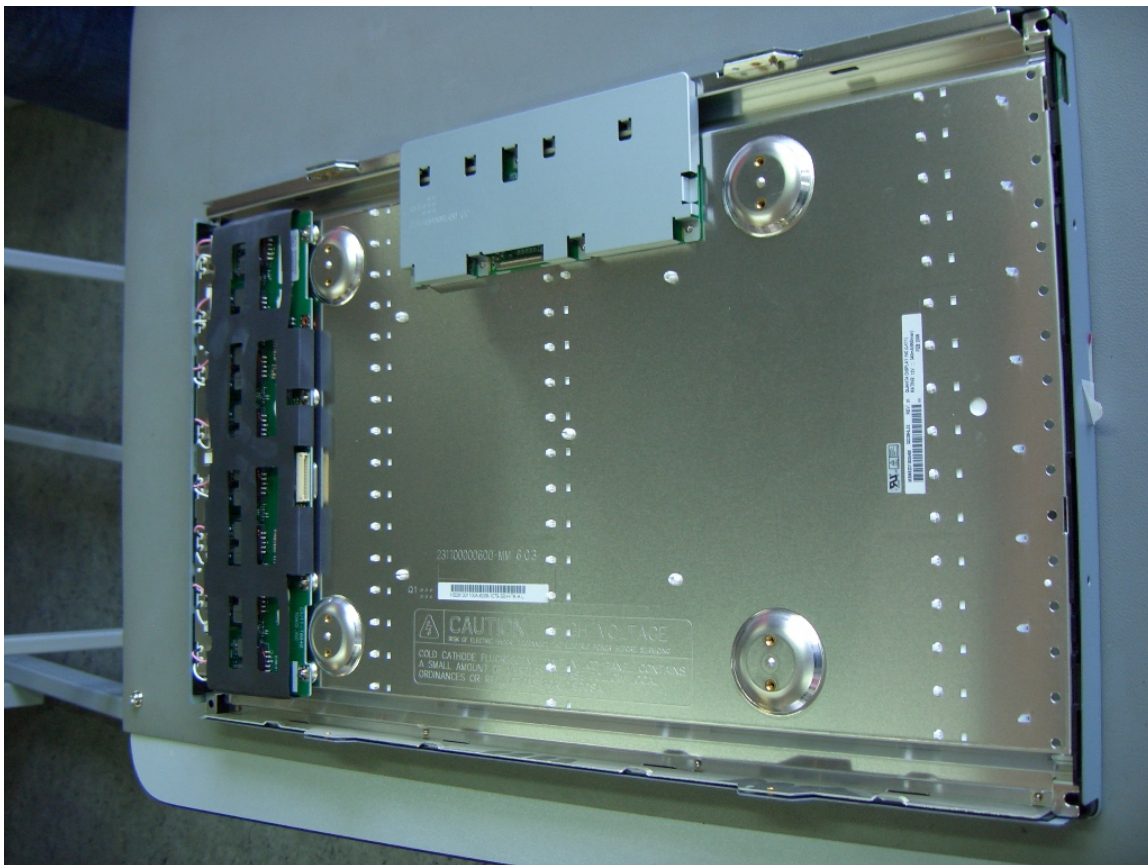


Picture 2

Cure

After disassembling the LCD panel (Pictures 3,4,5,6,7) you have to connect 4 test points with 2 wires like in description :

- Connect TP11 on the Logic board with TP506 on the left side board;
- Connect TP12 on the Logic board with TP507 on the left side board.



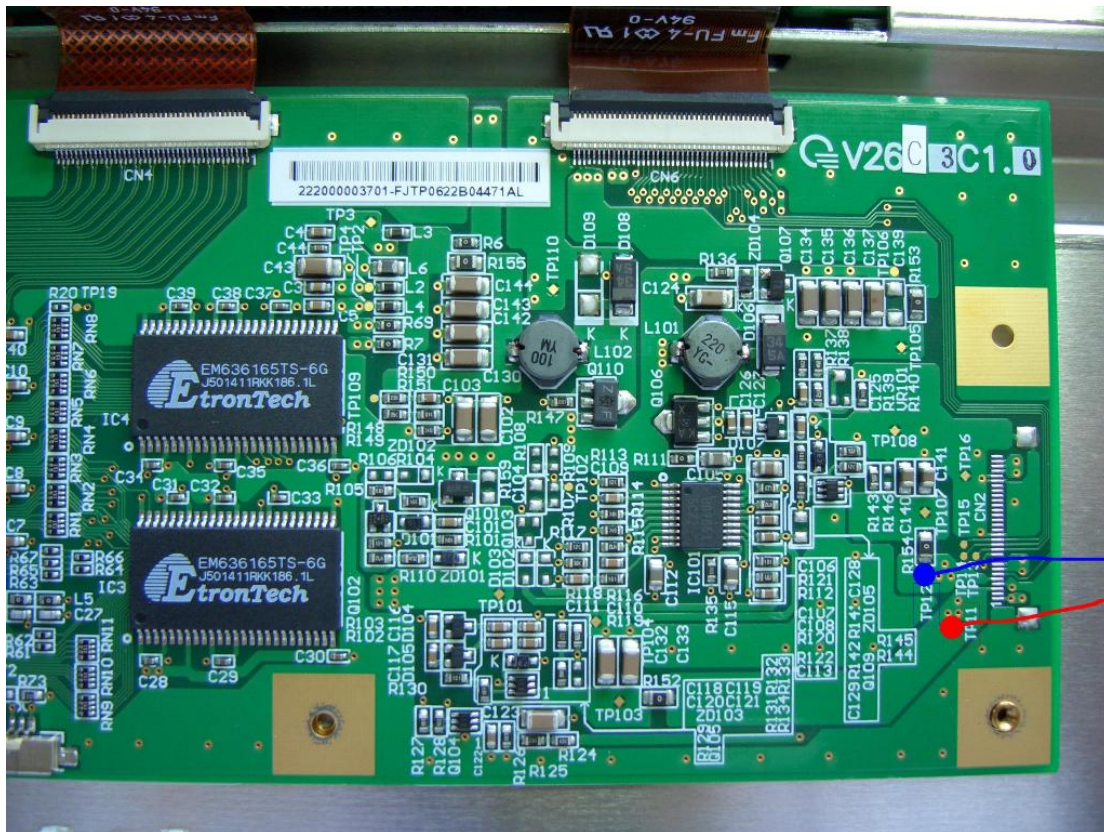
Picture 3



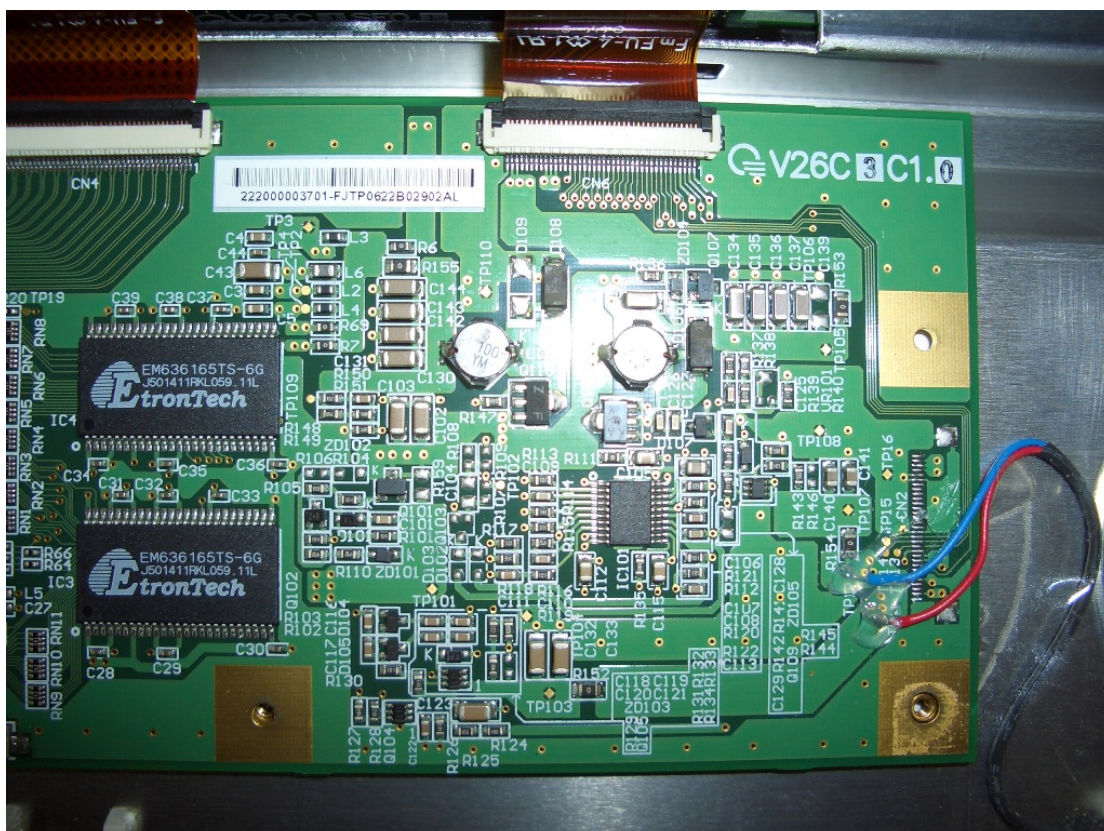
Picture 6



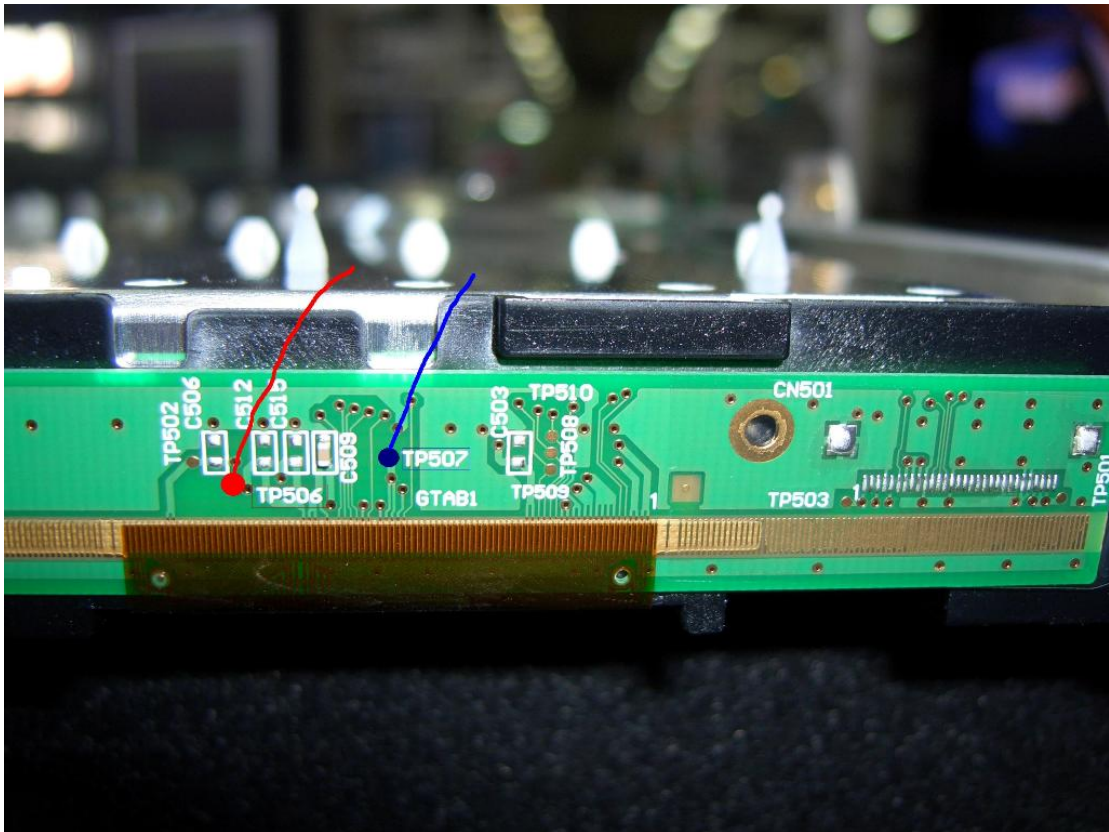
Picture 7



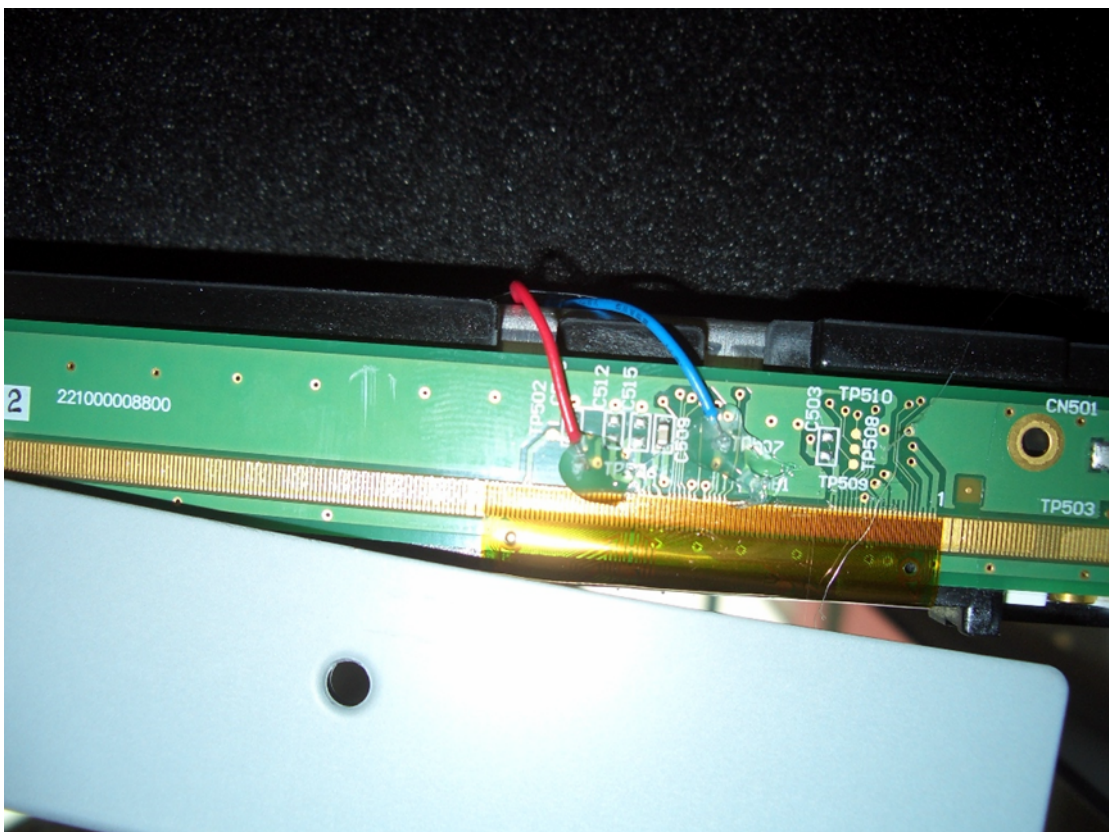
Logic board picture 1



Logic board picture 2



Left side board picture 1



Left side board picture 2