

Technical Bulletin

TB001178

FL298

Washing

Profile: General
Issue: July 2012
Compiled by: D. W.
Revision: 02

Title: Replacing drum paddles

Models Concerned:

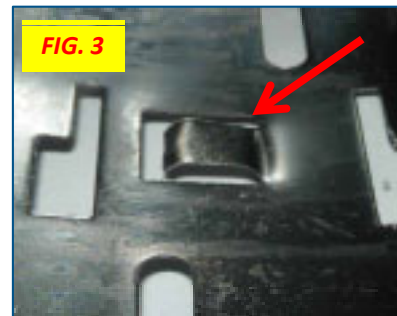
All washing machines and washer dryers .

Platform:

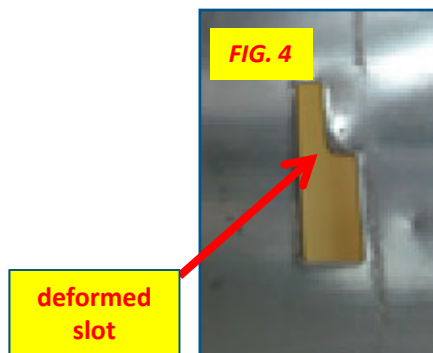
All
Except New Aqualtis & Future range.

Intervention required

- Use a Spring Hook tool ([C00560153](#)) indicated in **FIG.1**
- Insert the hook into the hole in the centre of the paddle **FIG.2** and use it to push the retaining spring of the drum (**FIG.3**) downwards.
- Release the paddle by pulling towards the drum front
- Ensure the retaining spring on the drum is horizontal as indicated in FIG.3



- Insert the new paddle in its appropriate position and make sure that ALL six feet are engaged correctly in their respective slots, avoiding any kind of slot deformation. If any slots are deformed (**FIG. 4**) or have "Burrs" correct the deformity and remove the "Burrs" using Emery tape ([C00981097](#))
- NOTE: extreme care must be taken whilst removing the "Burrs" ensuring safety gloves are worn.**
- Push the paddle towards the back of the drum to ensure correct position.
- To secure the paddle firmly to the drum, pull the retaining spring upwards inside the paddle, using the hook tool, check the tab has located correctly by accessing it through the sump hose drum hole this can be confirmed by gently pressing the tab with a screwdriver (**FIG. 5**)
- Correct location of tab (**FIG.6**)



IMPORTANT! Make sure the appliance is disconnected from the power supply before doing anything, otherwise take the necessary precautions

service

