

# GOLD STAR CKT-9822 CKT-9825

## NOTICE:

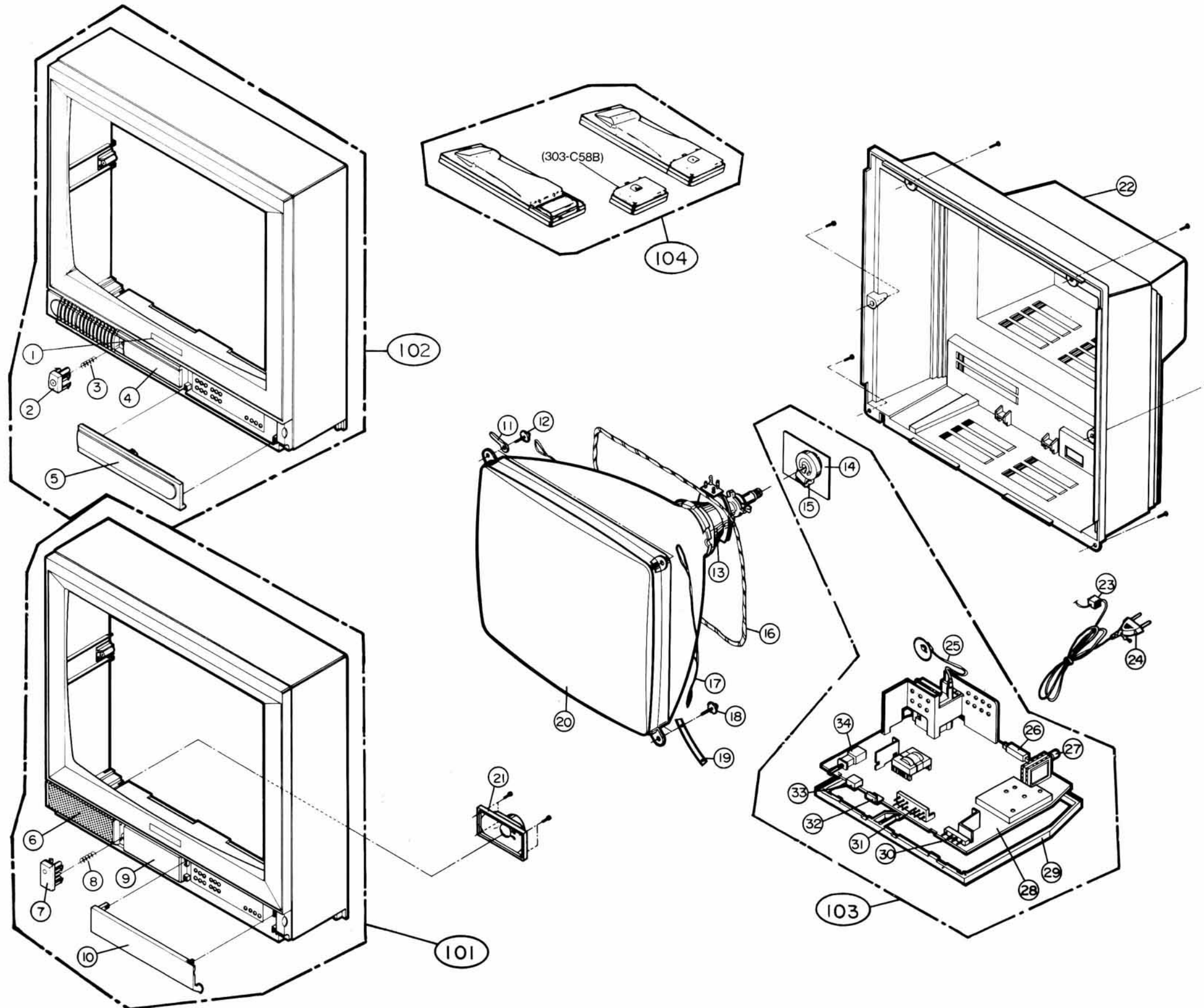
In this exploded view, some figures may differ from your actual TV a little. But each parts on the exploded view and the replacement parts list has the correct part number. Therefore, when ordering the service parts, put this service manual number, page and your requesting parts number on your document correctly, please. Then, we'll send the parts to you faster. The \*marks below are out of all relation to your TV.

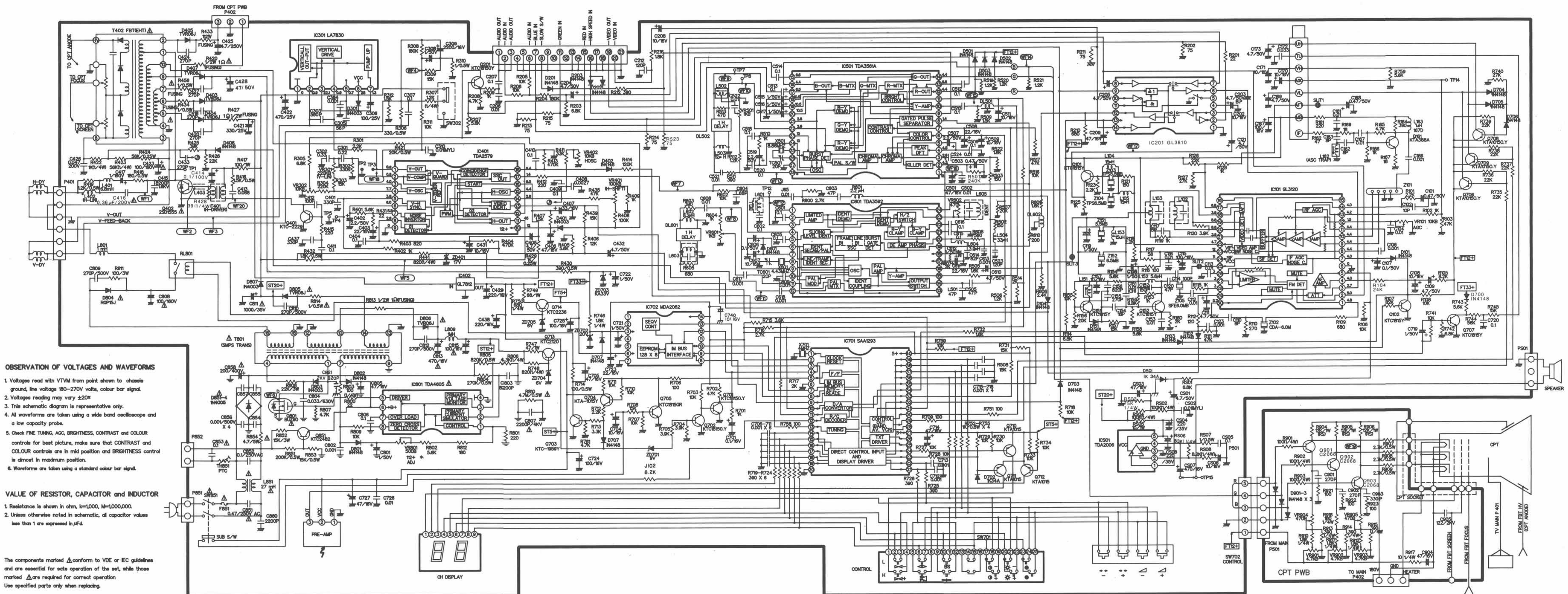
SP : Serviceable Parts  
NSP : Not Serviceable Parts

NO	DESCRIPTION	PART NO.	REMARKS
*1	MARK, BRAND(GS)	410-552B	SP
*2	BUTTON, POWER	441-158A	SP
*3	SPRING, BUTTON	320-062G	NSP
*4	WINDOW, LED DISPLAY	316-255A	SP
*5	DOOR, FRONT CONTROL	315-433A	SP
6	GRILL, SPEAKER	314-192A	SP
7	BUTTON, POWER	441-157A	SP
8	SPRING, POWER	320-062G	NSP
9	WINDOW, LED DISPLAY	316-254A	SP
10	DOOR, FRONT CONTROL	315-432A	SP
11	HOLDER, METAL ASSY	341-335A	NSP
12	SCREW, HEXAGON	332-057B	NSP
△13	DEFLECTION YOKE	153-051C	SP
14	PRINTED CIRCUIT BOARD ASSEMBLY, CPT	110-A31P	SP
15	SOCKET, CPT	381-090C	SP
△16	COIL, DEGAUSSING	150-276B	SP
17	LEAD SET, EARTH	170-704S	NSP
18	SCREW, HEXAGON HEAD	332-057B	NSP
19	HOLDER, LEAD WIRE	341-409H	NSP
△20	COLOUR PICTURE TUBE (WITH DY)	2055-V0081A	SP
21	SPEAKER	120-480A	SP
22	COVER, BACK	303-D72Q	SP
23	HOLDER, POWER CORD	341-242F	NSP
24	POWER CORD	174-003L	SP
△25	FLY BACK TRANSFORMER	154-177B	SP
26	21 PIN PERI-SOCKET	381-090A	SP
27	TUNER	113-105H	SP
28	PRINTED CIRCUIT BOARD ASSEMBLY, MAIN	110-K32A	SP
29	FRAME, MAIN CHASSIS ASSEMBLY	312-258A	SP
30	SWITCH, 4 KEYS	140-219A	SP
31	SWITCH, 12 KEYS	140-227A	SP
32	LED DISPLAY ASSEMBLY	262-006A	SP
33	PRE-AMP	106-042A	SP
34	SWITCH, MAIN POWER	140-278A	SP

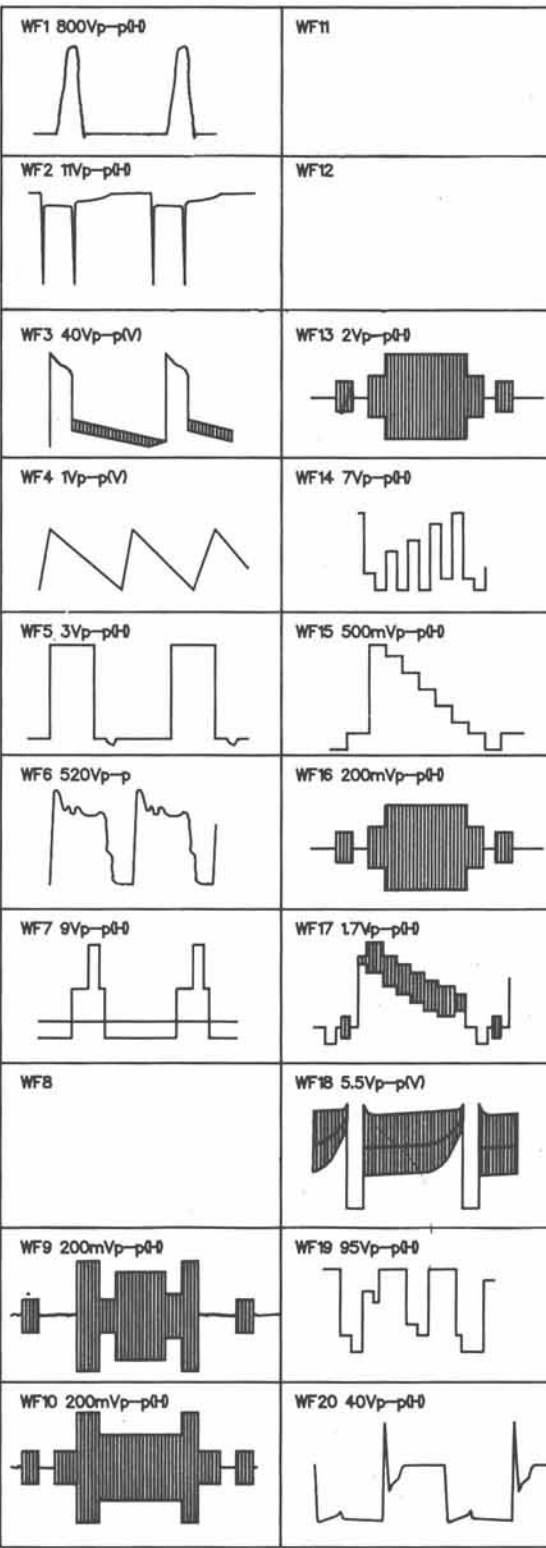
## SUB ASSEMBLY

101	CABINET ASSEMBLY, FRONT(9822)	300-852E	SP
*102	CABINET ASSEMBLY, FRONT(9825)	300-853A	SP
103	CHASSIS ASSEMBLY, PC91A MAIN	309-741A	SP
104	REMOTE CONTROL ASSEMBLY	105-057E	SP



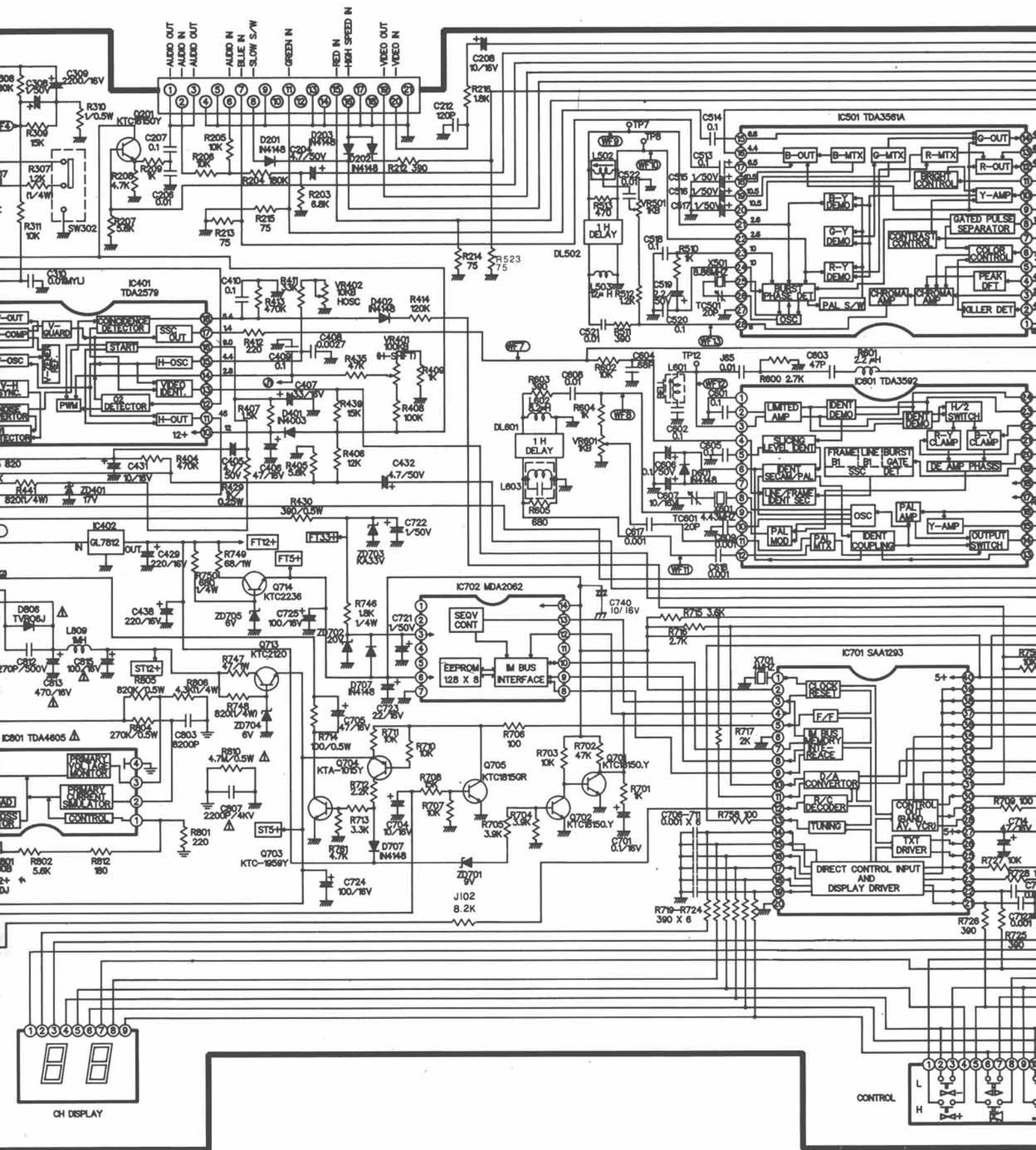


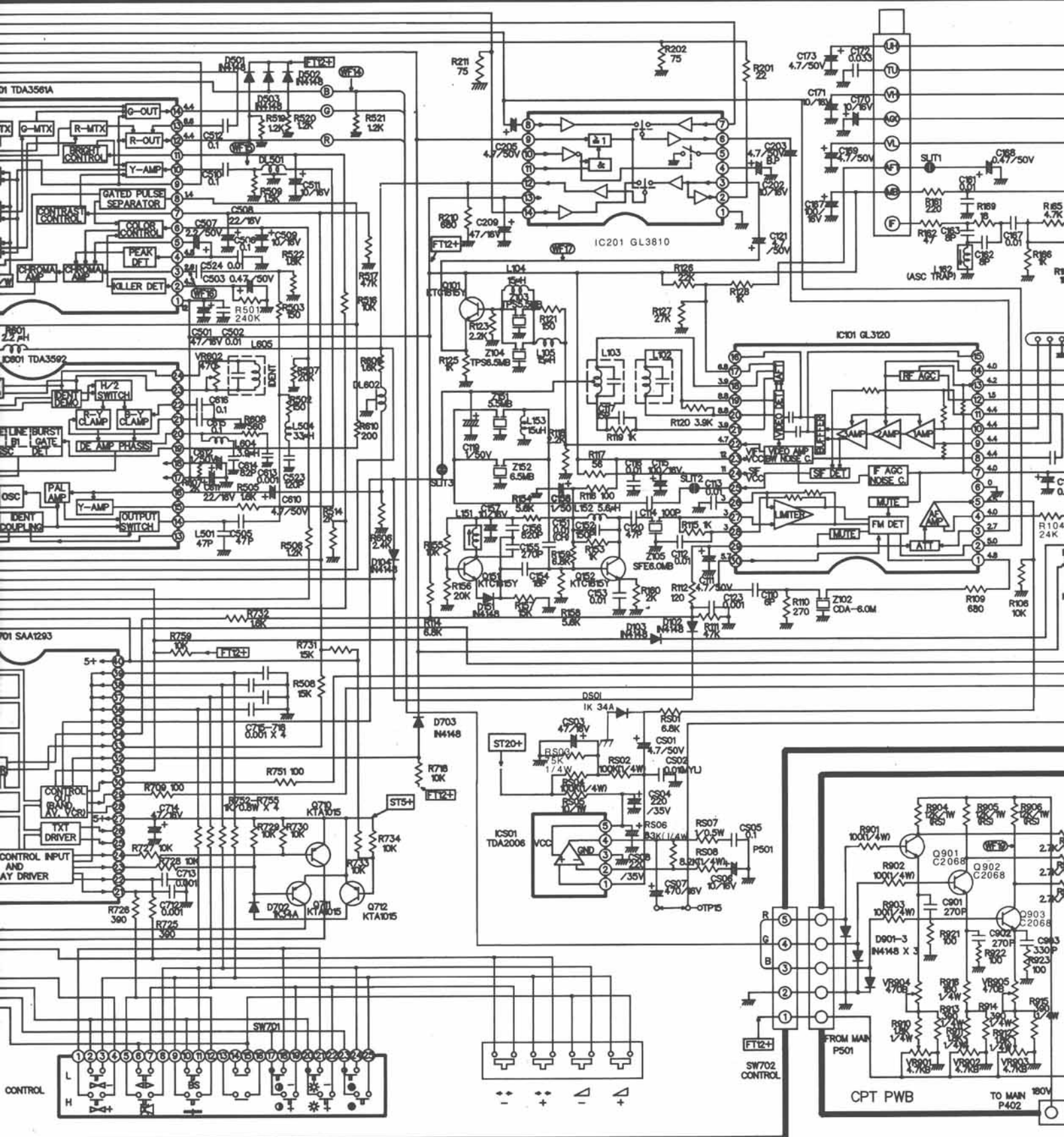
**NOTICE**  
 Since this is basic circuit diagram, the value of components and some partial connection are subject to be changed for improvement.

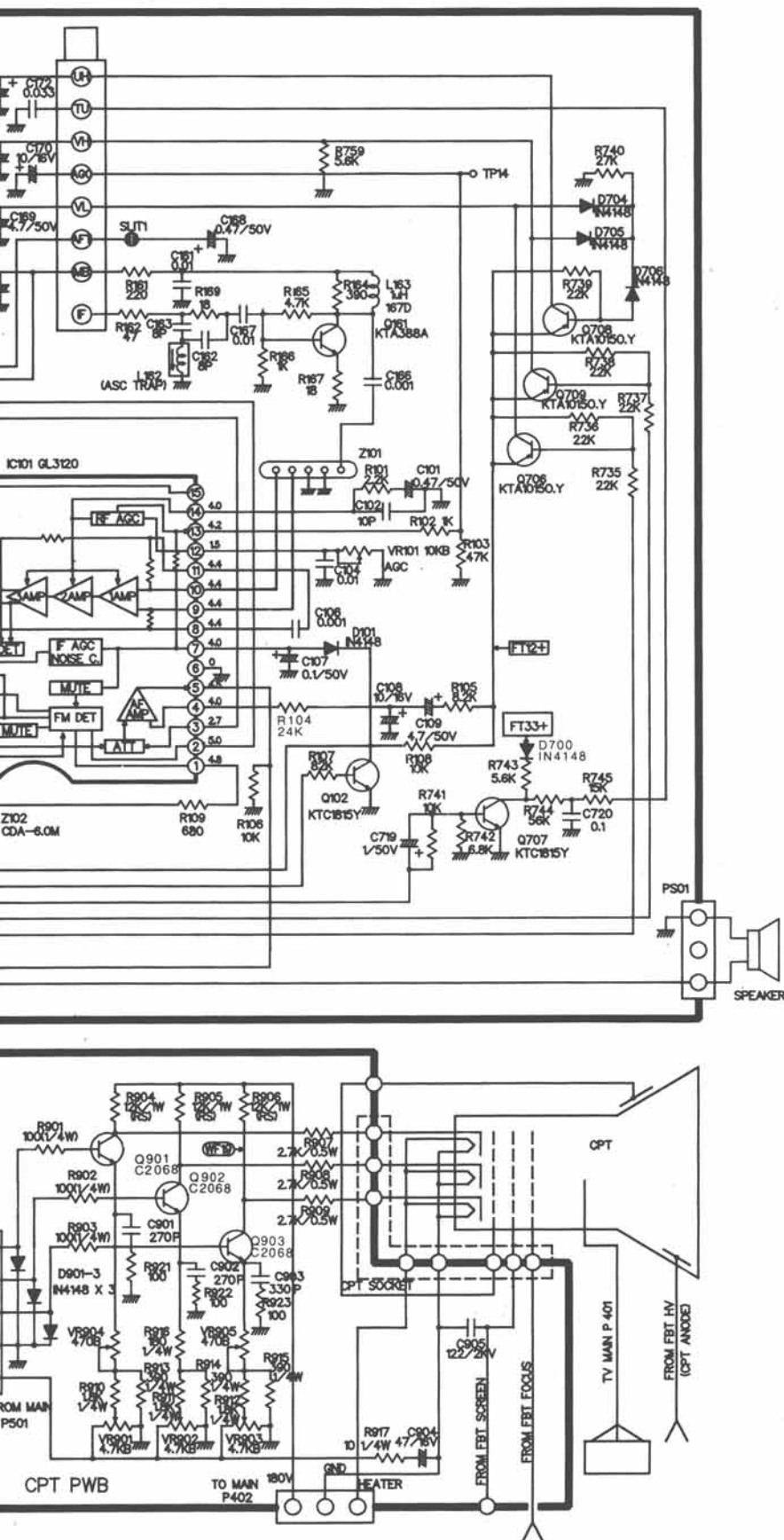












# NOTICE

Since this is basic circuit diagram, the value of components and some partial connection are subject to be changed for improvement.

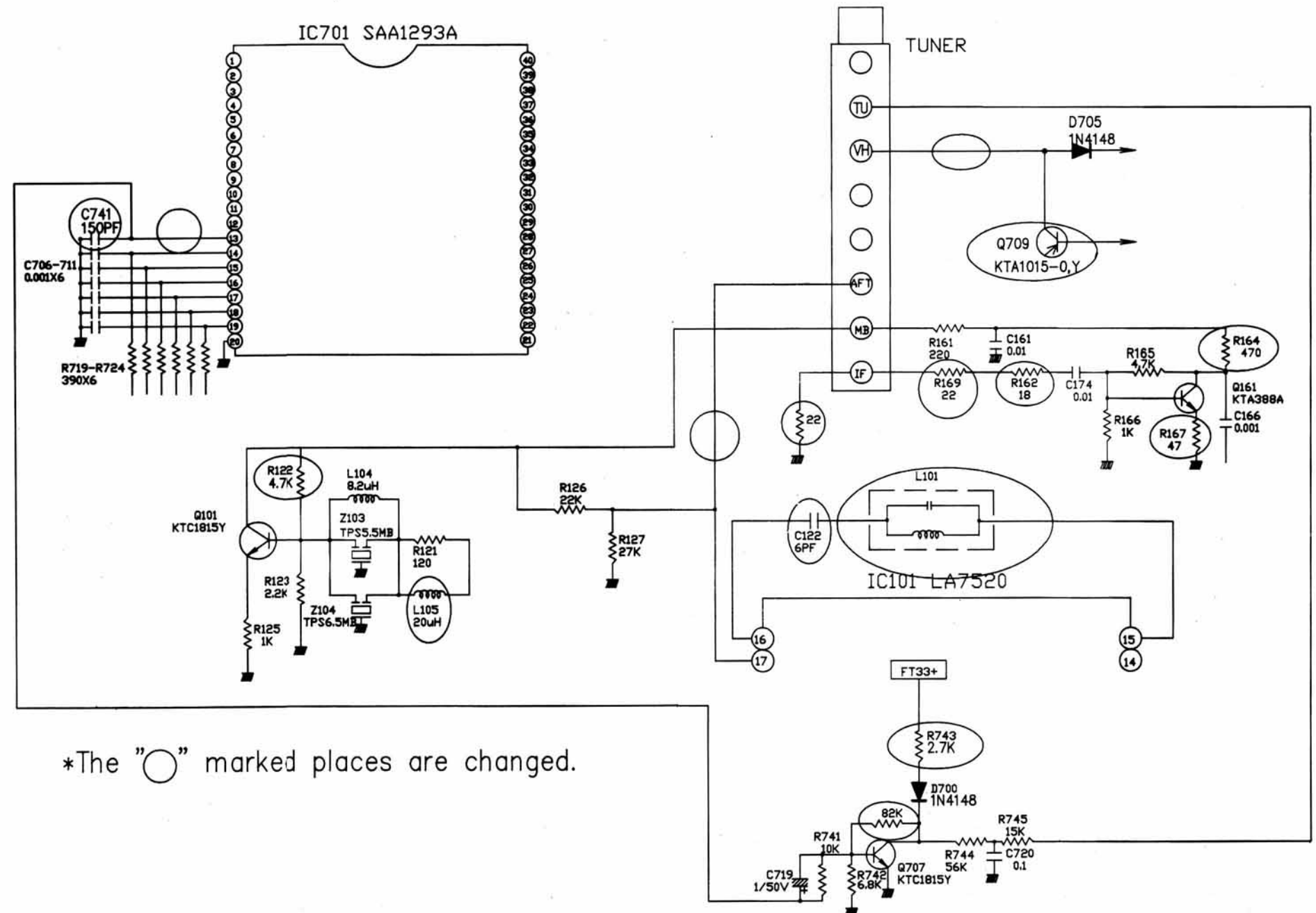
WF1 800Vp-p $\theta$	WF11
WF2 11Vp-p $\theta$	WF12
WF3 40Vp-p(V)	WF13 2Vp-p $\theta$
WF4 1Vp-p(V)	WF14 7Vp-p $\theta$
WF5 3Vp-p $\theta$	WF15 500mVp-p $\theta$
WF6 520Vp-p	WF16 200mVp-p $\theta$
WF7 9Vp-p $\theta$	WF17 1.7Vp-p $\theta$
WF8	WF18 5.5Vp-p(V)
WF9 200mVp-p $\theta$	WF19 95Vp-p $\theta$
WF10 200mVp-p $\theta$	WF20 40Vp-p $\theta$



# CIRCUIT DIAGRAM(PC91A) FOR SANYO'S TUNER AND THE PARTS LIST

		BEFORE CHANGE (14"ALPS TUNER(113-105K) (19"SHARP TUNER(113-105H))	AFTER CHANGE (SANYO TUNER(113-148D))
	LACATION NO.	P/N	P/N
1	R164	NOT IN USE	470ohm(ADD)
2	R169	33ohm	22ohm
3	R162	LEAD WIRE	18ohm
4	R121	120ohm	100ohm
5	R122	NOT IN USE	4.7Kohm(ADD)
6	L105	6.8uH	20uH
7	L163	0.85 uH	150-167J (DELETE)
8	Z101	K2950	K1950
9	R167	18 ohm	47ohm
10	R128	1Kohm	LEAD WIRE
11	L101	NOT IN USE	COIL(ADD)
12	R743	5.6Kohm	2.7K ohm
13	C122	NOT IN USE	6pF(ADD)
14	J54	NOT IN USE	LEAD WIRE
15	C741	NOT IN USE	150pF(ADD)
16	Q709	KTA1015-0	KTA1015-Y
17	R759	5.6K ohm	(DELETE)

As we have some problems that the tuner suppliers are running short, we explain the changed parts and place. So, when servicing and ordering TV set and its parts, refer to this page and the parts price list (ppl), please.



\*The "O" marked places are changed.

PART NO. 484-722Z

- \*Add two wires on the back side.
  1. Between GND of X701 and emitter of Q707
  2. Between GND of C717 and GND of J72
- \*Add a resistor(22 ohm) on the back side, between IF of tuner and GND.
- \*Add a resistor(82 Kohm) on the back side, between base and collector of Q707

## MECHANICAL PARTS

		ALPS/SHARP TUNER	SANYO TUNER
1	B/C PLATE	407-E80B	407-E80E
2	B/C ASSY	303-C74C	303-C74P